

Community Profile

Alliance for a Healthy Community



Salina and Saline County

2007

**Salina and Saline County
Community Profile
2007
by
Alliance for a Healthy Community
Mike Mattek, Chairperson**

*"To promote a healthy Saline County, Kansas community through assessment,
education and collaboration"*

Report Update Committee

Hampton McDowell, Chair
Pat Kinnaird
Mike Mattek
Tom Mulhern
Beverly Kissick
Casy Ziegler
Colleen McClellan
Anne Jung

Research Consultant

Rana DeBey

Editors

Salina Area United Way Staff
Janet Callarman
Melissa Gates

TABLE OF CONTENTS

I.	COMMUNITY CONDITIONS	
	Demographics	1
	Economy	7
	Poverty	9
	Social Capital	17
II.	COMMUNITY SERVICES	
	Education	21
	Public Transportation.....	25
	Housing.....	27
	Homelessness.....	31
III.	POPULATION SEGMENTS	
	Children.....	33
	Seniors (Independent Living)	37
IV.	HEALTH	
	Mental Health.....	41
	Substance Abuse	45
	Access to Health	51
	Access to Dental Care	55
	Childhood Obesity	57
	APPENDIX.....	i

Preface

The Alliance for a Healthy Community recognizes world events, the local economy, and community demographics have changed the Salina/Saline County landscape since it published its 2002 Community Compass Community Profile. The purpose of this new report is to update relevant data in the 2002 report and include new data concerning the most pressing social issues and human needs in Salina and Saline County.

The goals of the 2007 Community Profile update are as follows:

- Serve as a resource to non-profit organizations, government agencies, policy makers, faith-based organizations, foundations, business and others that are concerned with quality of life issues.
- Provide a valuable tool for the community to use to measure needs and track community progress.
- Be a catalyst to mobilize people to take action regarding the community's conditions and assets.
- Raise awareness of pressing issues and increase civic engagement.

The Alliance used 2002 Compass Community Profile results to organize eight community focus groups that subsequently led to community action. Those eight issues with data updates continue into the 2007 Community Profile. All reports are available online at www.salhelp.org/communityreports.

Saline County Socio-Economic Overview

Demographics.....**53,919 (2005)**

- 24.8% children and youth (2004)
- 14.0% seniors 65+
- 85.5% White, not Hispanic (2004)
- 7.2% Hispanic (2004)
- 3.3% Black
- 21.1% of families with children are headed by females (2004)

Population

- 2005.....53,919
- 2000.....53,616
- Children under 5.....3,634
- Children Birth-19... 14,980
- Person 65 and older...7,909

Economics

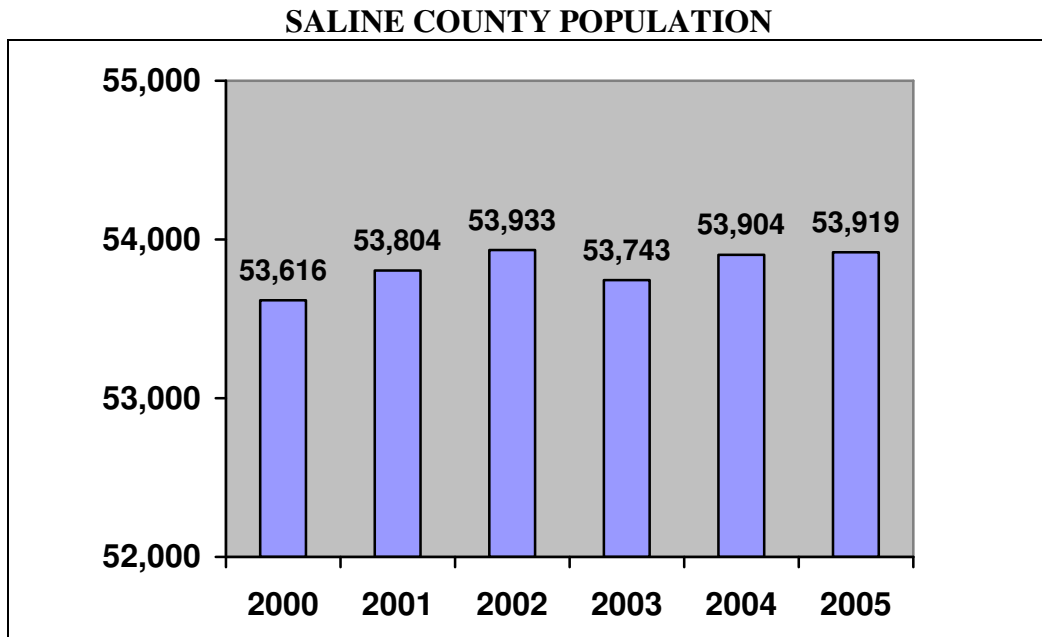
- Median family income...\$38,206 (2003)
- Per Capita income..... \$28,168 (2001)
- Percentage of families with all parents working...68.1%
- Percentage of children birth through 17 years living in poverty...14.4%
- Number of housing units...23,240
- Civilian labor force.....30,569

The above data comes from the following chapter on Population and Economy.

I. COMMUNITY CONDITIONS

Demographics

The population of Saline County in 2005 was **53,919** (estimate), 2004 it was **53,903** (estimate); and in 2000 it was **53,616**. The County has regained its 1960 population and Salina has just exceeded it. After the significant drop in population following the closing of Schilling Air Force Base in 1965, the County grew 5% and Salina 11% in the 1970's. This was followed by a no growth 1980 decade. Growth re-ignited during the 1990's with a County growth of 8.7% or 4,296 persons, and Salina grew 8%.



Source: www.census.gov/popest/cities/tables

SALINE COUNTY POPULATION

Age Group	2000	2001	2002	2003	2004	Percent of Total 2004 Population	2000-2004 Percent Change
0 – 4	3,713	3,705	3,737	3,733	3,634	6.7	-2.1
5 – 9	3,871	3,820	3,676	3,743	3,678	6.8	-5.0
10 – 14	3,977	3,883	3,918	3,907	3,808	7.0	-4.2
15 – 19	4,132	4,059	3,945	3,836	3,860	7.1	-6.1
20 – 24	3,367	3,554	3,768	3,840	4,025	7.4	19.5
25 – 29	3,319	3,162	3,171	3,120	3,294	6.1	-0.8
30 – 34	3,571	3,593	3,582	3,405	3,346	6.2	-6.3
35 - 39	4,090	3,911	3,734	3,544	3,488	6.4	-14.7
40 - 44	4,253	4,308	4,289	4,147	4,089	7.5	-3.9
45 - 49	3,902	4,056	4,072	4,169	4,137	7.6	6.1
50 – 54	3,296	3,480	3,565	3,554	3,691	6.8	12.0
55 - 59	2,510	2,621	2,818	2,965	3,064	5.6	22.1
60 - 64	2,116	2,143	2,176	2,216	2,284	4.2	7.9
65 – 69	1,927	1,906	1,883	1,881	1,918	3.5	-.05
70 – 74	1,891	1,813	1,769	1,798	1,701	3.1	-10.0
75 – 79	1,601	1,599	1,596	1,602	1,589	2.9	-0.7
80 - 84	1,601	1,599	1,596	1,602	1,589	2.9	-0.7
85 +	966	984	1,006	1,034	1,112	2.0	15.1

Source: Kansas Information for Communities. Center for Health and Environmental Statistics, Kansas Department of Health and Environment, August 2006.

The proportion of children (persons under 18 years of age) has grown only slightly (see following table) in the past decade. The population 65 years and older is stable has a percentage of total population. However, there are about 1,100 more children in the population and over 500 more senior citizens. While the children’s growth rate of 8.3% may not continue due to demographic reasons, demographics and in migration from the hinterland do suggest an even higher rate of growth of the population 65 year and older. Median age for Saline County has increased from 33.5 to 36.1 in the 1990’s.

LIVE BIRTHS BY RESIDENCE PER 1,000 PEOPLE

	2000		2001		2002		2003		2004		5-yr
	Number	Rate	Number	Rate	Number	Rate	Number	Rate	Number	Rate	Rate
KS	39,654	14.7	38,802	14.4	39,338	14.5	39,353	14.4	39,553	14.5	14.4
SA Co.	752	14.0	765	14.2	753	14.0	742	13.8	780	14.5	13.9

Source: Kansas Department of Health & Environment, Vital Statistics (<http://www.kdhe.state.ks.us/hci/annsumm.html>)

**DEMOGRAPHICS AND HOUSEHOLD COMPARISONS:
U.S. Bureau of the Census 2000 – 2003, 2004, and 2005 (estimates)**

People Quick Facts	Saline Co.	Kansas	Nation
Population, 2005 estimate	53,919	2,744,687	296,410,404
Population, percent change, April 1, 2000 to July 1, 2005	0.6%	2.1%	5.30%
Population, 2000	53,597	2,688,418	281,421,906
Population, percent change, 1990 to 2000	8.7%	8.5%	13.10%
Persons under 5 years old, percent, 2004	6.7%	6.9%	6.80%
Persons under 18 years old, percent, 2000	26.2	26.5	25.7
Persons under 18 years old, percent, 2004	24.8%	25.0%	25.00%
Persons 65 years old and over, percent, 2000	14%	13.30%	12.40%
Persons 65 years old and over, percent, 2004	14.0%	13.0%	12.40%
Female persons, percent, 2004	50.6%	50.3%	50.80%
Male persons, percent, 2004	49.40%	49.70%	49.20%
White persons, percent, 2004 (a)	92.3%	89.4%	80.40%
Black persons, percent, 2004 (a)	3.3%	5.9%	12.80%
American Indian and Alaska Native persons, percent, 2004 (a)	0.6%	1.0%	1.00%
Asian persons, percent, 2004 (a)	1.9%	2.1%	4.20%
Native Hawaiian and Other Pacific Islander, percent, 2004 (a)	0.0%	0.1%	0.20%
Persons reporting two or more races, percent, 2004	1.8%	1.6%	1.50%
Persons of Hispanic or Latino origin, percent, 2004 (b)	7.2%	8.1%	14.10%
White persons, not Hispanic, percent, 2004	85.5%	81.9%	67.40%
Living in same house in 1995 and 2000, pct age 5+, 2000	51.6%	52.4%	54.10%
Foreign born persons, percent, 2000	4.0%	5.0%	11.10%
Language other than English spoken at home, pct age 5+, 2000	7.0%	8.7%	17.90%
High school graduates, percent of persons age 25+, 2000	87.0%	86.0%	80.40%
Bachelor's degree or higher, pct of persons age 25+, 2000	20.4%	25.8%	24.40%
Persons with a disability, age 5+, 2000	8,792	429,687	49,746,248
Mean travel time to work (minutes), workers age 16+, 2000	14.8	19	25.5
Housing units, 2004	23,240	1,185,114	122,671,734
Homeownership rate, 2000	69.0%	69.2%	66.20%
Housing units in multi-unit structures, percent, 2000	16.4%	17.5%	26.40%
Median value of owner-occupied housing units, 2000	\$85,300	\$83,500	\$119,600
Households, 2000	21,436	1,037,891	105,480,101
Persons per household, 2000	2.43	2.51	2.59
Per capita money income, 1999	\$19,073	\$20,506	\$21,587
Median household income, 2003	\$38,206	\$43,113	\$43,318
Persons below poverty, percent, 2003	10.4%	10.4%	12.50%

Business Quick Facts	Saline County	Kansas	Nation
Private non-farm establishments, 2003	1,692	74,972	7,254,745
Private non-farm employment, 2003	27,126	1,109,869	113,398,043
Private non-farm employment, percent change 2000-2003	2.9%	-1.7%	-0.60%
Non-employer establishments, 2003	3,341	168,985	18,649,114
Manufacturers shipments, 2002 (\$1000)	D	50,897,796	3,916,136,712
Retail sales, 2002 (\$1000)	767,493	26,505,396	3,056,421,997
Retail sales per capita, 2002	\$14,226	\$9,770	\$10,615
Minority-owned firms, percent of total, 1997	3.5%	5.5%	14.60%
Women-owned firms, percent of total, 1997	20.5%	25.6%	26.00%
Housing units authorized by building permits, 2004	190	13,301	2,070,077
Federal spending, 2004 (\$1000)	301,690	19,130,677	21,437,817,271
Geography Quick Facts	Saline County	Kansas	Nation
Land area, 2000 (square miles)	720	81,815	3,537,438
Persons per square mile, 2000	74.5	32.9	79.6

Source: Policy Research US Census Bureau State, 2000.

- Saline County continues to become more ethnically diverse. Persons of Hispanic or Latino origin increased from 6.9% in 2003 to 7.2% in 2004. Black persons increased modestly from 3.2% in 2003 to 3.3% in 2004. Asian persons also increased modestly from 1.7% in 2003 to 1.9% in 2004.
- The latest Salina County per capita income (2001) is \$28,168, lagging behind the state by \$1,433.

HOUSEHOLD BY AGE OF SALINE COUNTY HOUSEHOLDER, 2000

Householder Age	Number of Households	Percent
15 to 24	1,452	7.0
25 to 34	3,559	17.0
35 to 44	4,659	22.0
45 to 54	4,148	19.0
55 to 64	2,764	13.0
65 to 74	2,416	11.0
75 to 84	1,868	9.0
85 and over	570	3.0
Total	21,436	

Source: U.S. Bureau of the Census, 2000

SALINA COUNTY HOUSEHOLD TYPES

	1990		2000	
	Number	Percent	Number	Percent
Total Households	19,826	100.00%	21,436	100.00%
Average household size	2.44		2.43	
Single person households	5,407	27.27	6,075	28.34
Single person 65+	2,247	11.33	2,296	10.71
With children under 18	6,929	34.95	7,367	34.37
With adults 65+	4,882	24.62	5,114	23.86
Married Couples	11,171	56.35%	11,336	52.88
With Children*	5,052	25.48%	4,983	23.25
Without Children*	6,119	30.86%	6,353	29.64
Female Householder, no spouse	1,851	9.34%	2,078	9.69
With Children*	1,230	6.20%	1,387	6.47
Without Children*	621	3.13%	691	3.22
Male Householder, no spouse	488	2.46%	797	3.72
With Children*	274	1.38%	521	2.43
Without Children*	214	1.08%	276	1.29
Non-Family Households	6,316	31.86%	7,225	33.70
Living Alone	5,407	27.27%	6,075	28.34
Two or More Persons	909	4.58%	1,150	5.36

*Children are defined as people under 18

Source: U.S. Bureau of the Census 2000, (www.population.gov)

SALINA SINGLE-PARENT HOUSEHOLDS

	1990	2000	Change	Percent Change	2002 as a Percent of all Households
Single-Parent Households	1,530	2,658	1,128	73.7%	14.4%

Source: U.S. Bureau of the Census; RDG Planning & Design

Economy

The employment sector data reveals the largest number of employees, in Saline County, were in the service and retail sectors. Typically these jobs pay less with few fringe benefits. The Basic Family Budget indicates an hourly wage for self-sufficiency that is not typical of the retail trade and services sector.

SALINE COUNTY AVERAGE WAGE AND CONSUMER PRICE INDEX COMPARISONS

Time Period	Kansas		Saline County		Index **	Saline County
	Average Wage per Job*	Percent Change	Average Wage per Job*	Percent Change	Consumer Price	Net Population Growth
2000	\$28,766		\$25,369			
2001	\$29,540	2.69	\$26,105	2.90	2.7	0.2
2202	\$30,216	2.29	\$26,753	2.48	1.2	1.3
2003	\$30,941	2.40	\$27,649	3.35	1.9	1.4
2004	\$32,214	4.11	\$28,273	2.26	2.4	-0.1
2005					3.2	
2006					2.10	
00-04		12.0		11.4	8.5	2.9
00-04/year		2.8		2.7	2.1	0.75
00-06					14.3	
00-06/year					2.3	

* U.S. Bureau of Economic Analysis, 2005

** U.S. Bureau of Labor Statistics, 2006

Source: Population Division, U.S. Census Bureau

NUMBER OF SALINE COUNTY PERSONS EMPLOYED OR DOLLAR TOTAL

	1990	2000	2001	2002	2003
Employment Total (by place of work)	32,679	28,206	28,953	29,462	29,321
Construction	1,715	(D)	2,183	2,178	2,191
Manufacturing	5,969	6,967	6,837	6,440	6,168
Transportation	1,222	1,939	(D)	*	*
Wholesale Trade	1,814	1,714	(D)	*	*
Retail Trade	6,332	7,864	5,643	5,367	5,197
Finance, Insurance, Real Estate	1,491	2,208	1,360	1,407	1,404
Services	8,935	11,135	(D)	*	*
Government and Govt. Services	3,823	4,422	4,523	4,664	4,608
Agricultural Services and Mining	527	(D)	(D)	*	*
Civilian Labor Force (Saline County residents)	27,034	29,119	30,072	30,255	30,735
Per Capita Income	\$19,593	\$27,780	\$26,879	26,839	27,579
Tangible Assessed Valuation (in millions of dollars)	\$210.00	\$383.10	\$401.00	\$422.00	433.40

*Data Unavailable

(D) = Data suppressed to avoid disclosure

Source: Bureau of Economic Analysis, (<http://www.ku.edu/pri/ksdata/esum/report/20169.htm#clf>)

**ECONOMIC POLICY INSTITUTE’S BASIC FAMILY BUDGET:
1 PARENT, 2 CHILD FAMILY IN URBAN KANSAS
(Inflation adjusted for 2004)**

	Monthly	Annual
Food	\$393	\$4,716
Housing	\$586	\$7,032
Health Care	\$285	\$3,420
Child Care	\$776	\$9,312
Transportation	\$182	\$2,184
Other Necessities	\$302	\$3,624
Taxes	\$262	\$3,144
Overall Budget	\$2,786	\$33,432
Hourly wage required assuming full time, year-round work		\$16.07

Source: Heartland Programs Community Needs Assessment, 2006

- Nearly 37% (4 out of 10) of the key industry jobs in Kansas pay wages that are below the minimum it takes to meet almost any Basic Family Needs Budget.

(Source: “Living on the Edge.” A Report on the State of Low-Income Working Kansas Families, Kansas Association of Community Action Programs, 2005)

Poverty

Many elderly, physically/mentally disabled and mentally ill, face self-sufficiency challenges, but most desire to live in their own homes as long as possible. They require varying levels of community based services and financial assistance to make this practical and cost effective. Others may lack the income, job skills, and/or life skills to be self-sufficient without some community assistance, but may have the potential to develop self-sufficiency.

- The current poverty measures (federal) were derived in 1964 from a 1955 Agricultural Department survey that estimated the cost of an “economy food plan” designed for “temporary or emergency use when funds are low,” not one expected to maintain adequate health or nutrition over time. Because families of three or more persons – all families on average, not just the poor – spent 1/3 of their incomes on food at the time, the analysts set the poverty level for these families at three times the cost of the economy food plan. A family of two adults and two children was the standard. The poverty threshold was then weighted by family size, with a larger family having a higher poverty threshold, and by the age of the householder, with an elderly head presumed to spend 10 percent less than those under 65 years of age. On that basis, when first established in 1964, the poverty threshold for a family of four was an income of \$3,100. The result of that calculation, with some adjustments for family size and age structure, became the original upper boundary of poverty. The current poverty thresholds are listed in a table below.

FEDERAL POVERTY THRESHOLDS 2006

Family Size	< 100% of Poverty Level	101 to 150% of Poverty	151 – 200% of Poverty
1	\$0 – 9,800	9,801 – 14,700	14,701 – 19,600
2	0 – 13,200	13,201 – 19,800	19,801 – 26,400
3	0 – 16,600	16,601 – 24,900	24,901 – 33,200
4	0 – 20,000	20,001 – 30,000	30,001 – 40,000
5	0 – 23,400	23,401 – 35,100	35,101 – 46,800
6	0 – 26,800	26,801 – 40,200	40,201 – 53,600
7	0 – 30,200	30,201 – 45,300	45,301 – 60,400
8	0 – 33,600	33,601 – 50,400	50,401 – 67,200

*Add \$3,400 for each additional family member.

Source: Data supplied by Kansas Department of Health and Environment, 2006

- Public opinion surveys and consumer expenditure surveys that have asked members of various populations what it actually costs to live at a minimally acceptable lifestyle all come up with annual requirements that are more than double the current poverty threshold. (Mangum, Garth. “Poverty Ain’t What it Used to Be”)

- A flexible or relative poverty index pegged to median family income would reflect real earnings gains as well as changes in the cost of living. For example, if the poverty threshold were set at 50% of the median family income for a family of four, the poverty threshold for 1994 would have been \$23,378, or 54% higher than the official level, and the poverty rate would have been 22.6% rather than the official 14.5%. Thus, because the poor have not kept pace in income growth with the rest of the population over the past two decades, their share of the national income has decline substantially. (Mangum, Garth. “Poverty Ain’t What it Used to Be”)
- Nationally, children account for 40% of poor people, almost twice as many as any other age group (U.S. Bureau of the Census Bureau, 1999)
- The very young, children 5 and under, account for nearly 40% of children living in poverty in Kansas. (Source: “Living on the Edge.” A Report on the State of Low-Income Working Kansas Families, Kansas Association of Community Action Programs, 2005)
- Approximately 14% of children (18 years and younger) are living in poverty within Kansas.
- The cost of medical care can wipe out a family’s income when someone is injured or seriously ill, leading to homelessness. More than one-third of all poor people do not have health insurance. (U.S. Bureau of the Census Bureau, 1999)
- Between 1999 and 2003 the number of unemployed people in the state doubled. (Source: “Living on the Edge.” A Report on the State of Low-Income Working Kansas Families, Kansas Association of Community Action Programs, 2005)
- In 71 of Kansas’ 105 counties over 25% of the children live in low-income families. (Ibid)
- Over the last decade the number of children living in poverty has increased in at least 22 Kansas counties. (Ibid)

**“OFFICIALLY POOR” IN KANSAS:
INDIVIDUALS AND FAMILIES LIVING AT OR
BELOW THE FEDERAL POVERTY LEVEL IN 2003***

Persons	Number Below 100% of Poverty Level	Percent
All Ages	288,000	10.8
Under 18 years of age	101,000	14.5
18 – 64 years of age	160,000	9.5
65 + years of age	27,000	9.1
All Families	55,000	7.5
Related Children under 18 years of age	94,000	13.8
Families with female-headed householder w/children, no husband	85,000	36.1

*Estimates

Source: “Living on the Edge.” A Report on the State of Low-Income Working Kansas Families, Kansas Association of Community Action Programs, 2005.

By the federally mandated poverty standards, currently nearly 11% of Kansans meet the technical definition poor. Using the well-researched Basic Family Needs Budget – which factors in real costs of food, housing, transportation, childcare, etc., into the equation – as the income standard, more than 25% (1 out of 4) Kansas qualify as poor. (Source: “Living on the Edge.” A Report on the State of Low-Income Working Kansas Families, Kansas Association of Community Action Programs, 2005)

As a result, there’s an “economic reality gap” between the federal government’s definition of poverty and the money it takes for individuals and families to meet their basic needs. According to the National Center for Children in poverty, most families of four would have to make *twice* their assigned Poverty Threshold in order to provide their children with basic necessities, such as housing, food, and health care.

SALINE COUNTY POVERTY DEMOGRAPHICS

Poverty by Age

	1990		2000	
	Number	Percent	Number	Percent
Total Population*	48,396	100.00%	52,163	100.00%
In Poverty	5,801	11.99	4,588	8.80
Not in Poverty	42,595	88.01	47,575	91.20
11 Years and Under	9,155	18.92	8,845	16.96
In Poverty	1,605	3.32	974	1.87
Not in Poverty	7,550	15.60	7,871	15.09
12 to 17 Years	3,757	7.76	4,838	9.27
In Poverty	462	0.95	424	0.81
Not in Poverty	3,295	6.81	4,414	8.46
18 to 64 Years	28,939	59.80	31,500	60.39
In Poverty	2,876	5.94	2,577	4.94
Not in Poverty	26,063	53.85	28,923	55.45
65 Years and Above	6,545	13.52	6,980	13.38
In Poverty	858	1.77	613	1.18
Not in Poverty	5,687	11.75	6,367	12.21

Source: www.censusscope.org, 2000

SALINE COUNTY LOW-INCOME INDICATORS

	2000	2001	2004	2005	2006
Number Families participating in TANF/AFDC	240	268	294	318	229
Number Households receiving food stamps	690	1,914	3501	1,659	1,702
Number Households receiving food directly	2,282	2,679	3,742		
Number Meals served	32,093	38,648	46,860	44,389	44,040
Number Participants in WIC*	1,269	1,344	1,477	1,532	1,557
Number Students receiving free or reduced lunches	3,504	3,456	3,810	3,756	3,859
Percent of total enrollment	39.0	38.0	40.0	44.0	45.0

*WIC: Women, Infants and Children Nutrition

**Data Incomplete

Source: Salina Area United Way, 2007

- In 2005, 7% of Saline County residents receive food stamps. (SRS, 2006)
- The total number of individuals receiving Temporary Assistance for Needy Families (TANF) in Kansas increased from 43,518 in March 2004 to 45,269 in March 2005 or a 4% increase. (Child Welfare League of America: Kansas's Children 2006 at www.cwla.org)
- Over the past four years the number of Kansans needing food stamps increased by 34% (Source: "Living on the Edge." A Report on the State of Low-Income Working Kansas Families, Kansas Association of Community Action Programs, 2005)
- From July 2002 to March 2004 the number of additional families depending on Temporary Assistance to Needy Families jumped 14% in Kansas. (Ibid)
- The level of free or subsidized food provided to families and individuals is an indicator of the magnitude of poverty and lack of self-sufficiency in the Salina area. The Low Income Indicators table displays this by a number of categories.
- In 2004, 294 families were receiving "welfare" support from the State, while over 3,501 families were using food stamps and almost 3,742 had received free food directly from local agencies.

WOMEN, INFANTS, & CHILDREN (WIC) CASELOAD

	2004	2005	2006
Total	1492	1532	1,557
Women	336	337	373
Infants	403	415	432
Children	753	780	752

Source: Salina-Saline County Health Department, 2007

- The Women Infant and Children (WIC) program served a total caseload of 1,791 pregnant women, infants and children ages 5 and under in 2005; a 41% increase from 2000. (Salina/Saline County Health Department)

FREE & REDUCED SCHOOL LUNCHES: 2006-2007

	Total Enrollment	Free Enrollment	Reduced Enrollment	Percent Free & Reduced
USD 305	7,251	2,611	918	48.67
USD 306	712	90	95	25.98
USD 307	470	84	61	30.85

Source: District Building Reports, School Year 2005/06

(http://www.ksde.org/leaf/reports_and_publications/free_redc_percent/free_redc.htm)

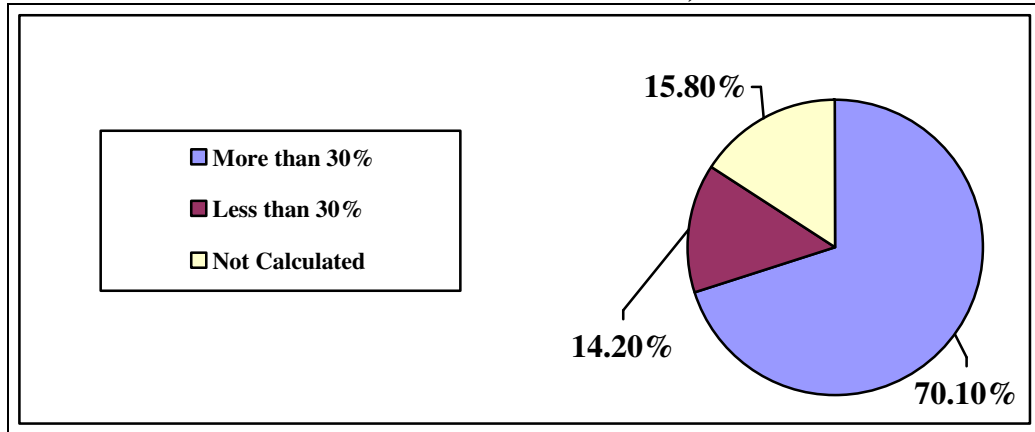
- In Saline County schools, 46% or 3,077 students receive free or reduced price lunches (Kansas Department of Education, 2005 School District Reports).

SALINA HOUSING AUTHORITY DEMOGRAPHIC PROFILE: 2005

	Low Rent Program	Section 8 Program
	161 Scattered Homes	316 Vouchers + 50 Transfers
Number of Family Members	439	585
Percent of Female Head of Household	89	77
Percent of Primary Income		
Work	63	28
Social Security	11	44
SSI	5	16
TANF	9	5
Child Support	7	3
Other	5	4
Percent of Occupancy Rate	99	100
Number on Waiting List	44 families	123 families
Percent of Single Tenants	91	96
Percent of Elderly/Disabled	17	44

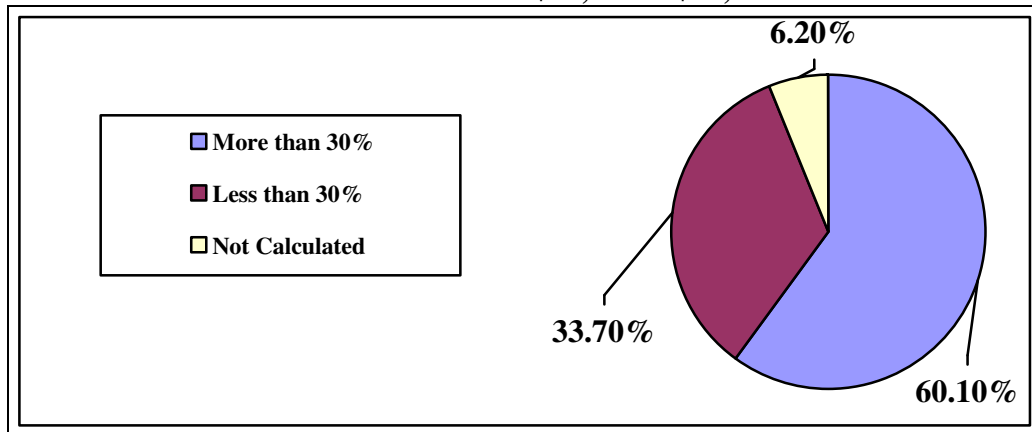
Source: Salina Housing Authority, Annual Report, 2005

**GROSS RENT AS A PERCENT OF HOUSHOLD INCOME, KANSAS:
Household Income Less Than \$10,000**



Source: "Living on the Edge." A Report on the State of Low-Income Working Kansas Families, Kansas Association of Community Action Programs, 2005

**GROSS RENT AS A PERCENT OF HOUSHOLD INCOME, KANSAS:
Household Income \$10,000 -- \$19,000**



Source: "Living on the Edge." A Report on the State of Low-Income Working Kansas Families, Kansas Association of Community Action Programs, 2005

- Unaffordable housing is defined by the U.S. Department of Housing and Urban Development as housing where renters pay more than 30% of their income on rent. A \$400 per month rent, by this standard, would require a \$16,000 annual family income.
- The cost of housing is a significantly unfair burden for low-income citizens in Kansas. Between 60 and 70% of impoverished and severely impoverished households in Kansas (those with annual incomes of less than \$10,000 to \$19,999 spend over 30% of their pretax earnings on rent. See above table "Gross Rent as a Percentage of Household Income."
- Increased availability of decent, low cost housing would decrease the number of homeless persons and provide a major component of stability for the homeless trying to be self-sufficient.

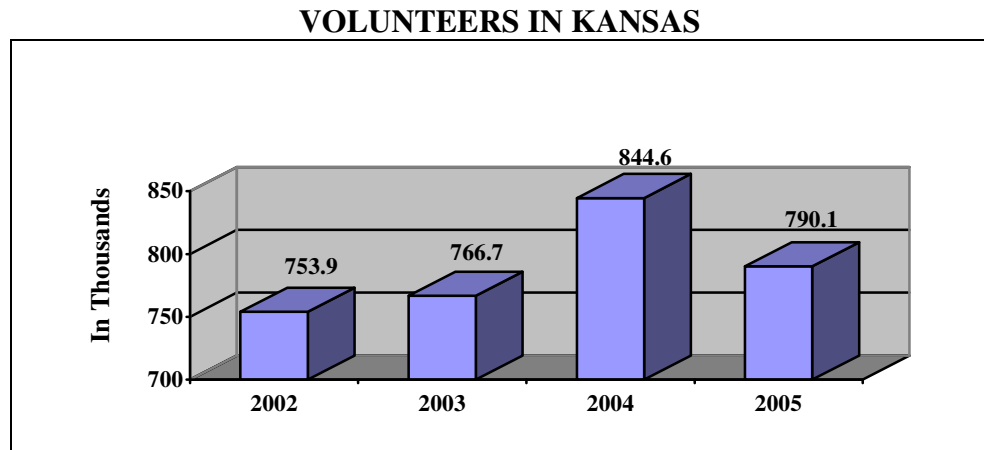
- The Salina Housing Authority owns housing for 163 households.
- OCCK, Inc. provides 24 housing units to the disabled, which are always fully occupied.
- In February 2007, the Authority estimated the following open market monthly rental cost in Salina: one bedroom = \$424, two bedrooms = \$558, three bedrooms = \$743.
- Childcare and utility costs at a minimum wage makes the open market rent of a decent dwelling unaffordable.
- A \$16,700, family of four, income can afford a maximum of \$558/month for a two-bedroom apartment.
- The Salina Housing Authority reports that there is an average 1-year waiting time for public or rent subsidized housing. The one bedroom waiting list has been opened occasionally since September 1998 but is currently closed as of February 2007. The Authority experiences an ongoing increase in requests for housing .

Social Capital

This community asset of problem solving and collective effort is difficult to measure because no system of record keeping exists to track the number of people involved in the wide variety of activities, organizations and volunteer situations. For purposes of this assessment, two factors will be discussed: volunteerism and charitable giving, each of which contribute to the community's social capital and partially describe the level of civic engagement.

Volunteerism: On November 20, 2001, United Way of America released its State of Caring Index, citing a gradual rise, nationally, in volunteerism over the last decade. A significant percentage of the adult population was volunteering in 1999, continuing a steady trend from the late 1980's. Though a large portion of the public volunteers, people have shown a tendency to spend less time per week volunteering.

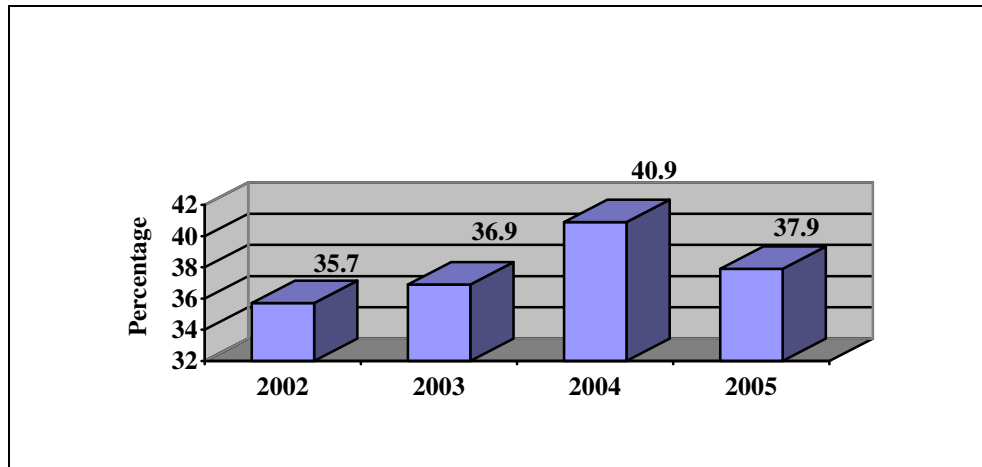
Nationally, volunteers spent a median of 50 hours on volunteer activities during the period from September 2004 to September 2005. This was down slightly from the level in the three previous surveys. Men spent 52 hours volunteering and women spent 50 hours. Median annual hours spent on volunteer activities ranged from a high of 96 hours for volunteers age 65 and over to a low of 36 hours for those 16 to 19 and 25 to 34 years old.



Source: Volunteering in America: State Trends & Rankings, 2002-2005, p. 70-71.
(www.nationalservice.gov)

- Kansas ranks 8th in rate of volunteering. The number of volunteers in Kansas increased by almost 100,000 from 2002 to 2004. (Corporation for National and Community Services)

KANSAS VOLUNTEERING RATE



Source: Volunteering in America: State Trends & Rankings, 2002-2005, p. 70-71.
www.nationalservice.gov

- The number of volunteers in Kansas increased by almost 100,000 from 2002 to 2004, peaking at 844,600 volunteers in 2004.
- The volunteering rate was highest in 2004 at 40.9% after increasing each year from 2002. In 2005, the rate decreased to 37.9%.
- The rate of volunteering for 2003 to 2005 in Kansas (38.6%) was higher than the 3-year rate for the Midwest overall (33.2%) and the nation (28.8%).

GIFTS OF TIME – UNITED STATES, 2005

By Age		Activity	
16 to 24 years	24.4%	Fund-raising	30%
25 to 34	25.3	Food prep/serving	26
35 to 44	34.5	Labor/transportation	23
45 to 54	32.7	Teaching	21
55 to 64	30.2		
65 and older	24.8		
Volunteers spent:	134 hours per year	Estimated value per volunteer @ 18.04/hour	\$2,417

Source: *Newsweek*, July 3/10, 2006, page 65.

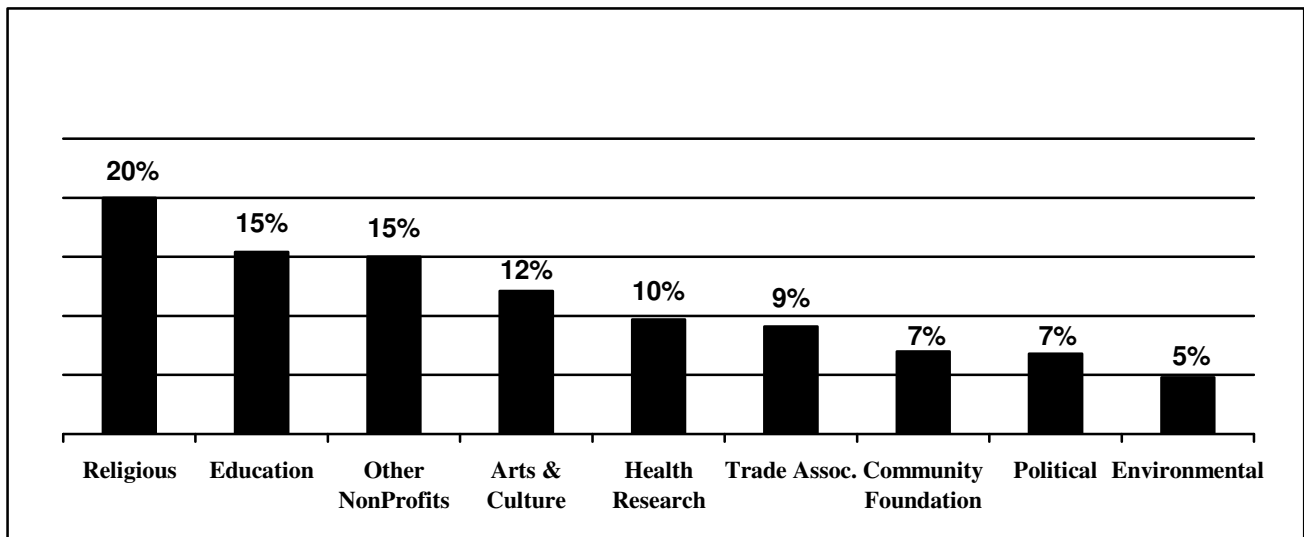
The above data from the Points of Light Foundation is more in line with the more recent assessments mentioned above, at around 30% of the population volunteering. Kansas ranked 8th in percentage of population volunteering.

The Salina Volunteer Connection coordinates and organizes volunteers for a broad variety of nonprofit and charitable programs. Over 1,000 persons are registered. Two special programs are for the elderly and the young. RSVP matches those 55 and older with volunteer opportunities. The President’s Student Service Challenge recognizes and awards scholarships, in conjunction with the Civitan Club, to middle and high school students for substantial time given in community service.

The Volunteer Connection reports that several factors inhibit the volunteer potential. There are not enough volunteer opportunities, especially for young persons. This is somewhat exacerbated by court ordered community service requirements. Secondly, rewarding volunteer service must be properly organized to ensure the experience is useful and matches talent to need. Local experience verifies the national trend that people are looking for shorter-term volunteer activities, but may participate in more of them, more often.

The Salina Healthy Youth/Healthy Community Initiative promotes youth volunteerism as a strategy to help young persons feel more a part of their community and to feel valued by the community. The volunteer activities help youth meet people, explore careers, and learn about their community. It is important that youth perceive their volunteering as a valuable service.

ORGANIZATIONS SUPPORTED BY INVESTORS



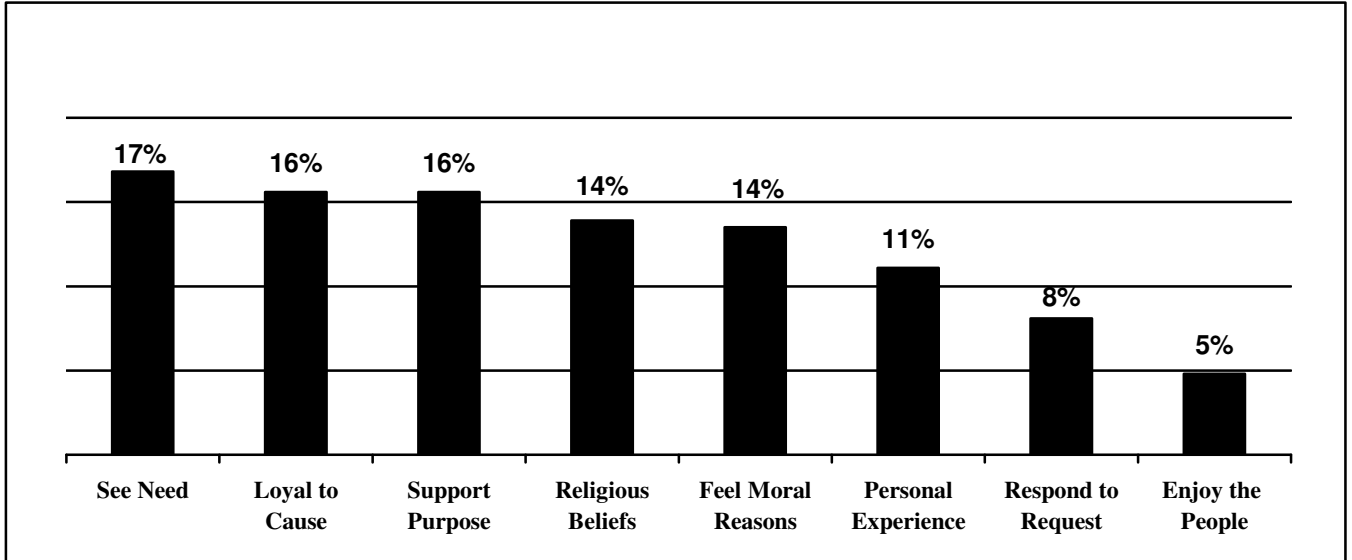
Source: Salina Area United Way Investor Report, 2005. (www.salhelp.org)

Charitable giving: One of the community’s greatest resources is the rich diversity of nonprofit organizations that serve the people of Saline County. Citizens have a long tradition of coming together to help each other, foster art and culture, stimulate learning, and generally improve the lives of the residents. Most of these organizations qualify for IRS 501(c) 3 status and are not only exempt from state and federal taxes, but may allow their donors to take a federal and often state income tax deduction for their charitable gifts. These nonprofits also bring into the community grants and contracts from out-of-county federal, state and private businesses and foundations to support their activities.

As seen in the table above, across all age groups, religious charities topped investors’ choices. There is no dominant type of organization supported by all investors because the investor contributes to several. The top three types of charities, accounting for half (50%) of the giving, were Religious (20%), Education (15%) and Other Non-profits (15%). The remaining six of the nine types of charities, which accounts for 67% of the choices, shared the other 50% of the charitable donation market. There are many pieces to this pie and a broad spectrum of types of organizations that

receive help from the investors. Though the traditional choices are at the top of the list; there is no dominant type of organization supported by donor dollars.

INVESTOR MOTIVATION TO DONATE



Source: Salina Area United Way Investor Report, 2005. (www.salhelp.org)

The Salina Area United Way investor makes donation decisions based on a variety of reasons. “Need”, “Cause”, and “Likes Mission” constitute approximately half (50%) of the reasons for donating. The highest ranked reason that donors give is driven by the needs of the recipients. Donors find satisfaction in fulfilling those needs. The top three (3) answers received are approximately the same average percent level (16%) in the ranking. Six (6) of the eight (8) were in “double digits” comprising approximately 87% of the responses. There is not much variance in these answers.

The United Way of America State of Caring Index report states that support from all sources to nonprofit organizations (largely excluding giving to place of worship) rose nationally 115 percent, from \$289 per capita to \$623 per capita, between 1989 and 1999 (in 1999 dollars). In Kansas, support increased 130%, from \$171 to \$394 per capita. Per capita, support from all sources in Kansas is 40 percent less than the national average. Kansas ranked 38th among states. It is possible that Kansas nonprofits do not receive as much national public and private funding as some other states.

II. COMMUNITY SERVICES

Education

Local primary and secondary education is a complex issue, given the multiple layers of government involved and the ever-changing demographics of the student population. The economy affects available resources and needs for education and training.

The following tables provide a sampling of data available. The Kansas Department of Education, local school districts, and the Head Start program are good sources of additional statistics and analysis. Their websites are listed in the appendix.

SALINE COUNTY ENROLLMENT TRENDS

	2001-2002	2005-2006	Percent Change
Total Enrollment	9,495	10,816	14.0
White	7,821	8,513	9.0
Black	534	492	-8.0
Hispanic	856	1,065	24.0
Asian	225	285	27.0
American Indian	59	86	46.0
Free lunches	2,298	2,845	24.0
Reduced price lunches	1,043	1,231	18.0
Free & Reduced combined	3,341	4,076	22.0
Special Education students	1,027	1,338	30.0

Source: Kansas Department of Education, Financial Reports, 2006

SALINE COUNTY ENROLLMENT BY DISTRICT

District	Enrollment		
	2001-02	2005-06	2006-07
USD 305 – Salina	7,483	7,399	7,251
USD 306 S.E. – of Saline	638	716	712
USD 307 – Ell-Saline	432	473	470
Salina Catholic Schools	2,480	2,228	728

Source: Kansas Department of Education, District Reports, 2006

SALINE COUNTY DROP-OUT RATES

	2000-2001	2001-2002	2002-2003	2003-2004	2004-2005
Total Enrollment	4,524	4,526	4,489	4,414	4,419
Number of Drop-outs	68	74	48	95	109
County Drop-out rate	1.5	1.6	1.1	2.2	2.4
State Drop-out rate	2.1	2.0	1.6	1.5	1.4

Source: (www.ksbe.stats.ks.us)

**SALINE COUNTY POST-SECONDARY STATUS:
SCHOOL YEAR 2004/05**

Reported Destination	Total	Male	Female
College	401	184	217
Other post secondary (non-college)	23	14	9
Employment	64	30	34
Military service	15	9	6
All other	10	4	6
Status unknown	50	28	22

Source: Kansas Department of Education, Building-level Reports, 2005

**ESTIMATED IMPACT OF STATE TAX REDUCTIONS: FISCAL YEAR 1999 -2005
(Reductions in Millions of Dollars)**

Type	1999	2000	2001	2002	2003	2004	2005
Car Tax	132.4	104.9	106.5	108.1	109.6	111.8	114.0
General Property Tax	266.2	326.2	338.9	362.3	378.4	393.5	409.3
Property Tax Subtotal	398.6	431.1	445.4	470.4	488.0	505.3	523.3
Income Taxes	157.0	158.1	166.8	169.6	194.2	201.0	206.9
Replace Inheritance tax w/ Estate Tax	30.5	63.3	66.4	69.7	73.2	76.9	80.7
Sales Tax Exemptions	60.4	66.8	73.0	73.8	75.8	77.9	80.0
Severance Taxes	2.7	4.6	4.6	4.6	4.6	4.6	4.6
Insurance Premium Taxes	21.6	26.6	28.6	24.1	19.6	15.0	12.0
Total Tax Reductions	764.2	759.3	794.0	821.9	865.6	891.3	918.6
Cumulative Reductions	1,814.2	2,384.9	3,178.8	4,000.7	4,866.4	5,757.6	6,676.2

Source: Kansas Department of Revenue, 2005, (<http://www.ksrevenue.org/pdf/EstEffect.pdf>)

- During the 1995-2001 economic boom, the Legislature cut taxes \$3.2 billion. Those reductions continued with a cumulative tax loss of \$6.7 billion by 2005.

**STATE & LOCAL FUNDING FOR SALINE COUNTY PUBLIC SCHOOL DISTRICTS:
GENERAL FUND (STATE LEVIED & ALLOCATED)**

District	2000/01	2004/05	Annual Rate of Growth (Avg. Percent)
Salina (305)	\$31,443,948	\$35,984,456	4.2
S.E. of Saline (306)	\$4,117,960	\$4,552,159	3.2
Ell-Saline (307)	\$2,955,916	\$3,116,668	1.7

Source: Kansas Department of Education, Budget Information by District, 2005

- The tables below display the federal, state and local tax revenues allocated to the three Saline County public school districts. These totals include other revenue streams in addition to “per pupil formula” state allocations.

SALINA (USD 305) REVENUE AND EXPENDITURES

Amount per Pupil

	FTE Enrollment	State Aid	Federal Aid	Local Revenue	Total Expenditures	Total Increase
2000-2001	7417	\$4825	\$1175	\$3133	\$9132	18.71
2001-2002	7329	5156	1592	3624	10372	13.58
2002-2003	7289	5053	1600	5566	12219	17.81
2003-2004	7204	4693	1707	5947	12347	1.05
2004-2005	7122	5017	1883	5049	11949	-3.22

Source: Kansas Department of Education 2006, (www.ksde.org)

SOUTHEAST OF SALINE (USD 306) REVENUE AND EXPENDITURES

Amount per Pupil

	FTE Enrollment	State Aid	Federal Aid	Local Revenue	Total Expenditures	Total Increase
2000-2001	654	\$5178	\$211	\$2097	\$7486	1.85
2001-2002	633	4992	180	3312	8484	13.33
2002-2003	653	5433	192	2507	8132	-4.15
2003-2004	672	4701	215	2919	7836	-3.64
2004-2005	686	5302	209	3181	8692	10.92

Source: Kansas Department of Education 2006, (www.ksde.org)

ELL- SALINE (USD 307) REVENUE AND EXPENDITURES

Amount per Pupil

	FTE Enrollment	State Aid	Federal Aid	Local Revenue	Total Expenditures	Total Increase
2000-2001	437	\$6592	\$300	\$2092	\$8983	16.16
2001-2002	436	6604	407	1611	8621	-4.03
2002-2003	442	6956	512	1893	9362	8.60
2003-2004	448	7169	367	2259	9794	4.61
2004-2005	450	7415	393	2292	10101	3.13

Source: Kansas Department of Education 2006, (www.ksde.org)

Public Transportation

The current system for providing transportation in Salina is a combination of both public and private sectors and relies on multiple members of the non-profit community for transportation coordination and for identifying and obtaining resources, primarily through grants from local, state, and federal governments, to even maintain the current level of service. In spite of significant efforts by the not-for-profit partners, though, the current level of service is unable to address the ongoing demand, and weekend service is limited. While a centralized dispatch will improve coordination efficiency among current partners and reduce rider confusion, the lack of a computerized system will continue to jeopardize overall efficiency.

The absence of a regularly scheduled transportation system manifests itself in a variety of ways, and its absence has the greatest impact on those with limited economic means and/or who do not have their own licenses or vehicles. Area youth are particularly vulnerable, as they may be too young to obtain a driver's license, may not have their own car, may not be able to afford the repeated costs of the services from the current providers, or may not be in a position to request available services in advance. Therefore, transportation access by area youth to recreational and employment destinations of interest is severely constrained.

The Transportation Providers meet bimonthly with the Commission on Aging taking the lead in data collection for the past ten years. Data is available concerning total number of rides, purpose of transportation services, costs of services, and funding source for the six most recent fiscal years. The following table shows that ridership has increased by about 12% over the past six fiscal years and currently averages about 11,900 trips per month. With the exception of the Volunteer Connection (VC), where the numbers of rides have been reasonably consistent, ridership generally has increased for each of the providers, although the data suggests that the providers maybe at maximum capacity at this time.

Recent data from OCCK for the most recent quarter showed that OCCK provided 8,933 rides and was unable to provide transportation for 639 requests during that period.

NUMBER OF RIDES IN SALINE COUNTY BY TRANSPORTATION PROVIDER AND FISCAL YEAR

Year	HOTLINE	OCCK	COA	SRHC	VC	CKMHC	Total
2000	9,496	85,573	22,414	7,276	2,176	6,474	133,409
2001	11,481	89,639	22,088	944	2,701	2,422	129,275
2002	13,426	104,816	24,655	4,802	2,175	10,320	160,194
2003	18,790	91,700	19,989	4,458	2,199	7,084	144,220
2004	15,165	101,907	18,748	3,211	2,376	n/a	141,407
2005	16,382	97,393	21,362	5,587	2,389	n/a	143,113

Source: Saline County Commission on Aging, 2006

Data in the chart below shows the expenses by local providers and year of funding.

The overall funding for transportation in the greater Salina area has almost doubled over the past six fiscal years. The costs expended by the COA and CKMHC have remained relatively constant, but those at Hotline have increased by about one-third, those at OCCK have just about doubled, and those at the Volunteer Connection and the Regional Health Center have increased by nearly 400%.

SALINE COUNTY FUNDING BY PROVIDER AND FISCAL YEAR

Year	Hotline	OCCK	COA	SRHC	VC	CKMHC	Totals
2000	\$52,721	\$531,247	\$56,440	\$16,343	\$4,459	\$3,350	\$664,560
2001	\$72,999	\$508,460	\$55,220	\$8,789	\$6,350	\$1,195	\$656,013
2002	\$62,119	\$502,579	\$61,638	\$60,024	\$16,178	\$4,480	\$707,018
2003	\$62,580	\$683,605	\$50,558	\$61,710	\$15,289	\$4,935	\$878,677
2004	\$86,406	\$679,674	\$47,673	\$58,744	\$4,631	n/a	\$877,128
2005	\$70,220	\$1,004,929	\$53,200	\$77,655	\$17,758	n/a	\$1,223,762

Source: Saline County Commission on Aging, 2005

As shown in the following table, not only have there been significant increases in the level of funding over the past six fiscal years, but there have also been significant shifts in the source of this funding. In fiscal year 2000, more than half (58.6%) of the funds were from local, non-governmental entities. The state and federal governments contributed a little more than one-third (35.2%) of the funds, and local government contributed only 6.2% of the funds. Six years later, the percentages have changed dramatically. For fiscal year 2005, the largest source of funds (52.9%) was from state and federal governments. The percentage of funds from local governments increased to 14.4%, and local, non-governmental entities contributed less than one-third (32.7%) of the total funds.

SALINE COUNTY PUBLIC TRANSPORTATION BY SOURCE OF FISCAL YEAR FUNDING

Source	2000	2001	2002	2003	2004	2005
DoT- Federal	\$148,718	\$133,497	\$210,022	\$201,680	\$272,034	\$440,547
KDoT - State	\$56,169	\$44,549	\$57,011	\$72,713	\$138,188	\$173,748
Medicaid	\$29,158	\$45,847	\$28,208	\$45,213	\$42,776	\$32,485
Saline County COA	\$15,940	\$18,125	\$13,558	\$2,027	\$3,563	\$66,643
City of Salina	\$25,000	\$54,004	\$57,570	\$86,303	\$89,150	\$109,000
SRHC	\$30,878	\$27,261	\$74,799	\$78,472	\$92,286	\$122,088
United Way	\$6,097	\$6,138	\$5,275	\$5,000	\$5,564	\$6,550
OCCK	\$249,250	\$218,689	\$196,152	\$244,797	\$110,926	\$130,517
Rider Fees	\$99,548	\$94,030	\$51,810	\$129,593	\$121,421	\$128,632
Corp. Nat. Service	\$1,786	\$1,847	\$1,767	\$2,246	\$1,219	\$2,108
SRS	\$2,086	\$9,025	\$0	\$0	\$0	\$0
In-Kind	\$0	\$0	\$0	\$0	\$0	\$11,442
Totals	\$664,630	\$653,012	\$696,172	\$868,044	\$877,128	\$1,223,760

Source: Saline County Commission on Aging, 2006

Housing

Affordable, quality housing was a priority issue in the 2002 Community Profile and continues to be in 2006. Subsequent data and community studies indicate there is an inadequate supply of quality housing affordable to low and moderate-income families, especially smaller units appropriate for individuals, new families, the elderly, and the disabled.

SALINE COUNTY HOUSING OCCUPANCY & HOUSEHOLDER CHARACTERISTICS

	1990	2000
Housing units	21,129	22,695
Housing units: Occupied	19,826	21,436
Housing units: Occupied: Owner occupied	13,216	14,799
Housing units: Occupied: Renter occupied	6,610	6,637
Housing units: Vacant	1,303	1,259
Age of householder: Owner-occupied housing units: 15 to 24 years	198	282
Age of householder: Owner-occupied housing units: 25 to 64 years	9,332	10,643
Age of householder: Owner-occupied housing units: 65 years and over	3,685	5,714
Percentage owner-occupied 65 and over	27.9%	38.6%
Age of householder: Renter-occupied housing units: 15 to 24 years	1,183	1,170
Age of householder: Renter-occupied housing units: 25 to 64 years	4,486	4,487
Age of householder: Renter-occupied housing units: 65 years and over	941	980
Percentage renter-occupied 65 and over	14.2%	23.8%
Race of householder: Owner-occupied housing units: White	12,724	13,853
Race of householder: Owner-occupied housing units: Black	243	302
Race of householder: Owner-occupied housing units: American Indian, Eskimo, Aleut	31	42
Race of householder: Owner-occupied housing units: Asian and Pacific Islander	79	177
Race of householder: Owner-occupied housing units: Asian		172
Race of householder: Owner-occupied housing units: Native Hawaiian/Pacific Islander		5
Race of householder: Owner-occupied housing units: Other or Multiple	139	425
Race of householder: Renter-occupied housing units: White	6,112	5,891
Race of householder: Renter-occupied housing units: Black	297	327
Race of householder: Renter-occupied housing units: American Indian, Eskimo, Aleut	49	57
Race of householder: Renter-occupied housing units: Asian and Pacific Islander	51	67
Race of householder: Renter-occupied housing units: Asian		64
Race of householder: Renter-occupied housing units: Native Hawaiian/Pacific Islander		3
Race of householder: Renter-occupied housing units: Other or Multiple	101	295

Source: SETA: Office of Social and Economic Trend Analysis, (www.seta.iastate.edu)

**TENURE BY HOUSEHOLD SIZE: OCCUPIED HOUSING UNITS
SALINE COUNTY**

Household Size	Total Units	Total Percent	Units Owner Occupied	Percent Owner Occupied	Units Renter Occupied	Percent Renter Occupied
Total	21,436	100.0	14,799	69.0	6,637	31.0
1- Person	6,075	28.3	3,261	53.7	2,814	46.3
2- Person	7,483	34.9	5,770	77.1	1,713	22.9
3- Person	3,194	14.9	2,245	70.3	949	29.7
4- Person	2,792	13.0	2,133	76.4	659	23.6
5- Person	1,322	6.2	995	75.3	327	24.7
6- Person	389	1.8	267	68.6	122	31.4
7 or more Person	181	0.8	128	70.7	53	29.3

Source: U.S. Bureau of the Census, 2000

- 69% of households own their home (Table: Tenure by Household Size). Coincidentally, the percent of 1 and 2 person households is the same as the percent of 1 and 2 person households that rent.

SALINE COUNTY HOUSING AVAILABILITY

	Total Units	Occupied Units	Vacant Housing Units				Vacancy Rate	
			Total	Percent for Sale	Percent for Rent	Percent Seasonal etc.	Home Owner	Rental
Saline	22,695	21,436	1,259	18.7	42.3	5.3	1.6	7.4
Kansas	1,131,200			15.9	33.2	10.3	2.0	8.8

Source: U.S. Bureau of the Census, 2000

- In interviews with staff of the Housing Authority, City Neighborhood Services Department and Board of Realtors state the hardest housing demand to fill is homes with one or two bedrooms. This market demographic includes younger residents wishing to enter the housing market for the first time and the elderly and disabled. The data in the table above showing household size bears this out.

SALINA PERMITTED DWELLING UNITS

Year	Single Family	Duplex Townhouse	Triplex Fourplex	Multi Family	Total Units
1995	135	0	0		135
1996	105	40	0	189	344
1997	87	28	0		123
1998	80	36	0	158	274
1999	82	28	0	6	116
2000	123	0	0		123
2001	95	0	8	64	167
2002	74	13	0	0	87
2003	91	17	0	0	108
2004	83	2	0	48	133

Source: City of Salina, 2005

- From 1995 through 2004, 1,610 dwelling unit building permits were issued in the City of Salina: 1,145 single family, 465 multifamily (Table: Permitted Dwelling Units). The number of households increased 1,596 during that period (U.S. Bureau of the Census Bureau). As many as 80 housing units are demolished each year. The net increase in housing units is not keeping pace with the growth in households.

- Locally, a low to moderate income house is commonly defined as one costing \$80,000 or less. At \$80,000, the required cash down payment would be \$2,400, with a monthly payment of \$600 (\$7,200/year). If the payment represents 25% of household income, total household income would need to exceed \$29,000/year. Thirty-three percent of Saline County households have less than this income.

- Given the largest portion of the Salina housing stock being older than 50 years, rehabilitation is becoming more a common way to bring both rental and owner occupied housing to the market.

Homelessness

Homelessness is defined as not owning, renting or sharing a permanent, safe dwelling. Although many homeless people work, their efforts to find and keep jobs are hindered by substance abuse, inadequate transportation, lack of childcare and basic life skills.

Local homeless prevention programs (utility and rent assistance) are limited in their prevention effort due to a shortage of flexible funds needed to meet a variety of basic needs. The local agencies dedicated to assisting with basic needs rely on grants to focus on serving specific population in certain timeframes. Grant funding, the source of most homeless prevention funds, is inconsistently available and subject to various funding requirements. People fall through the cracks and service providers struggle assisting those in need.

- Ashby House provides shelter and other assistance to families unable to provide for themselves. Most families consist of women with young children. In 2006, Ashby House sheltered 454 persons.
- The Salina Rescue Mission provides sleeping accommodations, meals and counseling for homeless men. Life skills training and coaching for re-entering the job market are also provided, mostly by members of the Mission's Board of Directors. The mission is funded entirely by donations with a residential capacity of 62.
- Most clients are considered disenfranchised from their families and/or community. The average age of the clients is getting younger.
- The Salina Rescue Mission reports that the major barrier to homeless regaining employment is transportation. Most entry-level jobs require 2nd and 3rd shift work. OCCK, Inc. is the only available transportation provider and they only operate during the day and limited hours on weekends.
- Ashby House and OCCK, Inc. provide life skill training to persons to improve their self-sufficiency. These agencies and the Salina Rescue Mission also mentor persons in job readiness.

LOCAL TEMPORARY SHELTER USAGE

	2001	2002	2003	2004	2005	2006
Ashby House	5,779	4,520	3,342	3,440	4,978	5,434
Rescue Mission	14,083	19,344	19,957	19,944	18,890	18,191
Total Nights of Shelter	19,862	23,864	23,299	23,384	23,868	23,625

Source: Saline Rescue Mission & Ashby House, 2005.

- No local data is available on the number of families and persons who are homeless.
- Nationally, children represent 39% of the overall homeless population. Over 40% of homeless children are under the age of 5. (The Urban Institute, 2000, The Better Homes Fund, Newton Center, MA).
- Approximately 44% of homeless people using shelters, soup kitchens or other assistance programs did paid work during the past month, but did not earn enough to move out of shelter. (Better Homes Fund, 2001)
- Homeless children go hungry twice as often as other children and get sick twice as often. More than one-fifth of homeless preschool children have emotional problems serious enough to require professional care. (Better Homes Fund, 2001)
- Up to 42% of teens that are homeless are also gay, lesbian, or transgender. (GLBTP, 2003)
- Nationally, an estimated 18% of homeless parents who had previously lived in their own apartment reported they left their residence because of domestic violence. (Homes for the Homeless and the Institute for Children and Poverty, 1999)

III. POPULATION SEGMENTS

Children

Many factors influence conditions for children. Secure housing, sufficient food and appropriate nutrition, primary health and dental care, progressive educational opportunities, informed and dedicated parents and families and finally a supportive community provide the underpinnings of security and future success. Each year, increases in the percentage of children eligible for free/reduced school meals is an indicator of family economic well being. Early childhood education investments are long-term cost effective investments in the futures of each child and the community. Youth development and employment opportunities are essential components and build on successful early childhood investments.

Saline County Children:

- The number of households with children increased 6.3% from 6,929 in 1990 to 7,367 in 2000.
- In 2000, 34.4 % of the Saline County households had children.
- Between 1990 and 2000 the number of female householders with children grew 15.4%.
- Cost of one infant and one preschooler in family childcare represents 17% of the median family income; 19% in a center. (Saline County KACCRRRA 2006 Child Care Profile. www.kaccrra.org)
- Center care for one infant (birth to 11 months) consumes 10.5% of the Saline County Median Income and 8.9% in family childcare. (Ibid)
- Center care for one infant and 1 preschooler consumes 19.2% of the Saline County Median Income and 17.3% in family childcare. (Ibid)
- The 2000-01 Behavioral Risk Factor Surveillance Survey (BRFSS) (see full report, Health Risk Behavior of Saline County, 2000-2001 for further detail and discussion) reports that nearly two-thirds (64%) of children in the survey aged 0 to 4 years regularly spent at least part of their week in a day care center, day care home, or pre school, with 25% spending the equivalent of four days or more in a pre school or out-of-home child care.
- 34% of children reported in the BRFSS currently in school were unsupervised after school one or more days during the past week. Not surprisingly, reported percentages increased with increasing age of the child. Only 6% went to some type of childcare.
- A serious institutional problem in early childhood care and education is the high turnover rate in personnel. However, the turnover rate has dropped from 134% in 2000 to 23% in 2005 due to Saline County Smart Start Initiative using wage bonuses and scholarships for early childhood professional development. (Saline County Smart Start Annual Report, 2005)

Kansas Children:

- In 2004, approximately 18, 481 Kansas grandparents had primary responsibility for caring for their grandchildren. (Ibid)
- As of December 2003, 2,647 adults and adolescents, as well as 12 children younger than 13, had been diagnosed with HIV/AIDS in Kansas. (Ibid)
- 73% of children under age 5 parents both work outside the home in the state of Kansas. (Kansas Center for Community Economic Development, Policy Research Institute, University of Kansas, 2001)
- 45% of children under age one attend an early care and education program. 78% and 4% of four and five year olds, respectively, attend. (Kansas Center for Community Economic Development, Policy Research Institute, University of Kansas, 2001)
- 43% of children with a stay-at-home parent attend an early care and education program regularly. (Kansas Center for Community Economic Development, Policy Research Institute, University of Kansas, 2001)
- Now, most mothers combine care giving and employment. 61% of mothers with children under age three were employed in 2000, compared with just 34% in 1975. (Kansas Association of Child Care Resource and Referral Agencies, 2001)

PHYSICAL HEALTH & SAFETY INDICATORS

	Saline County Rate	Kansas Rate
Childhood Deaths	19.3	24.9
Infant Mortalities	11.5	7.2
Births w/ adequate prenatal care	82.6	81.4
Kindergartners fully immunized by age 2	79	80.3
Low-Birth-Weight Babies	7.7	7.3

Source: Kansas KIDS COUNT Data, (www.kac.org), 2006

- Between 5 and 10% of the children are uninsured (Saline County KACCRRRA 2006 Child Care Profile. Profile data notes at www.kaccrra.org)
- In 2005, 79 % Saline County Kindergartners were immunized by age two; approximately 1.3% less than the state average. (Kansas Kids Count, 2006 at www.kac.org)

HEAD START AVAILABILITY FOR FAMILIES LIVING IN POVERTY

Year	Head Start Availability*		Early Head Start Availability**	
	Saline Co.	Kansas	Saline Co.	Kansas
2001	112.1	67	30.8	5.5
2002	105.4	67.8	30.7	5.5
2003	107.6	64.7	30.9	6.1
2004	124.4	75.5	38.7	6.8
2005	105.3	64.8	31.4	5.8

Source: US Department of Health and Human Services; US Census Bureau

*Number of Head Start slots available per 3-4 year olds living below the poverty threshold

**Number of Early Head Start slots available per 0-3 year olds living below the poverty threshold

- Family childcare homes (group, licensed and registered) provide 65% of the child cares capacity. Centers (child care centers, Head Start (Heartland Programs) and school-age programs) account for 29% of childcare capacity. (Saline County KACCRRRA 2006 Child Care Profile. Profile data notes at www.kaccrra.org)

- Seven early childhood centers and one family childcare have achieved national accreditation. (Ibid)

- Females head 21% of family households with children under age 18. (Saline County KACCRRRA 2006 Child Care Profile. Profile data notes at www.kaccrra.org)

- Affordable, full-day childcare is one of the most persistent barriers to low-income parents who want to work or go back to work (U.S. Bureau of the Census Bureau reports, 2000).

PERCENTAGE OF LIVE BIRTHS TO MOTHERS WITH LESS THAN A HIGH SCHOOL DEGREE

	2000	2001	2002	2003	2004
Saline County	18.6%	18.8%	18.6%	18.5%	18.0%
Kansas	19.8%	21.8%	23.4%	22.6%	22.5%

Source: Kansas Department of Health and Environment.

Note: Data represent calendar year.

Definitions: Percentage of live births to mothers (of all ages) with less than a high school degree.

**REPORTED CHILD ABUSE & NEGLECT CASES:
PER 1,000 UNDER AGE 18**

Year	Saline County	Kansas
2000	94.26	60.26
2001	100.88	59.87
2002	96.04	61.08
2003	86.36	58.78
2004	109.57	63.76
2005	88.8	59.8
Substantiated Claims (2005)	15.8	10.1

Source: Connect Kansas, 2005

(<http://www.connectks.org/portal.php?county=10085&outcome=05&quest=show>)

- In 2003, there were 27,304 total referrals of child abuse and neglect. Of these, 15,840 were referred for investigation. (Child Welfare League of America: Kansas's Children 2006 at www.cwla.org)

OUT-OF-HOME PLACEMENTS

	2001	2002	2003	2004	2005
Saline Co.	7.1	4.2	3.8	3.5	3.1
Kansas	7.6	6.6	6.4	6.5	6.9

Rate Per 1,000 Children

Source: Kansas KIDS COUNT Data, (www.kac.org), 2006

Seniors (Independent Living)

Currently Saline County seniors and disabled rely upon a wide range of public/private services including transportation, home support services, nutritional support, assistive technology, and home health services provided by community non-profits, for profits and city/county entities to maintain their independence. In some cases, program capacity and funding limitations dictate the number of low-income participants. In others, programs have been able to meet increased demands through a variety of funding opportunities. Grant funding and third party billing (insurance, Medicare and Medicaid) underwrite the costs for low-income residents.

Medicaid reductions have resulted in service curtailment while demand has increased. Costs for service coordination and services have increased with demand. Financial resources are unstable due to the complicated state waiver system that depends upon the federal government allowing states to redirect nursing home entitlement funds to community based services. The waivers include Frail Elderly (FE), Chronic Disease, Developmental Disability, Mental Illness, and Injury/Trauma. Funding fluctuations and increased demand for services creates waiting lists for low-income residents. For those who can afford services, service capacity grows with the demand. Community-based programs face a severe workforce shortage because wages have not kept pace. The workforce shortage threatens the expansion of community-based services.

Also in high demand is assistive technology for home modifications, durable medical equipment and mobility support. In Saline County, these needs are met through a patchwork of nonprofit sector partners who work together with families and community volunteers to address this unmet need. Assistive technology is another avenue that can reduce demands on caregivers, improve independence and quality of life for the aged and disabled.

Threats to the security of senior and disabled populations include cost of living increases, changes in a complex national healthcare system, absence of dental coverage, public safety including elder abuse and exploitation crimes, housing availability and affordability, and reliance upon informal (family, friends, volunteers) caregivers.

Many current trends are expected to continue into the future. The number of seniors in all age groups will continue to increase at an accelerated rate and so will the demand and costs for services. The following chart reveals the projected growth in the senior Saline County population.

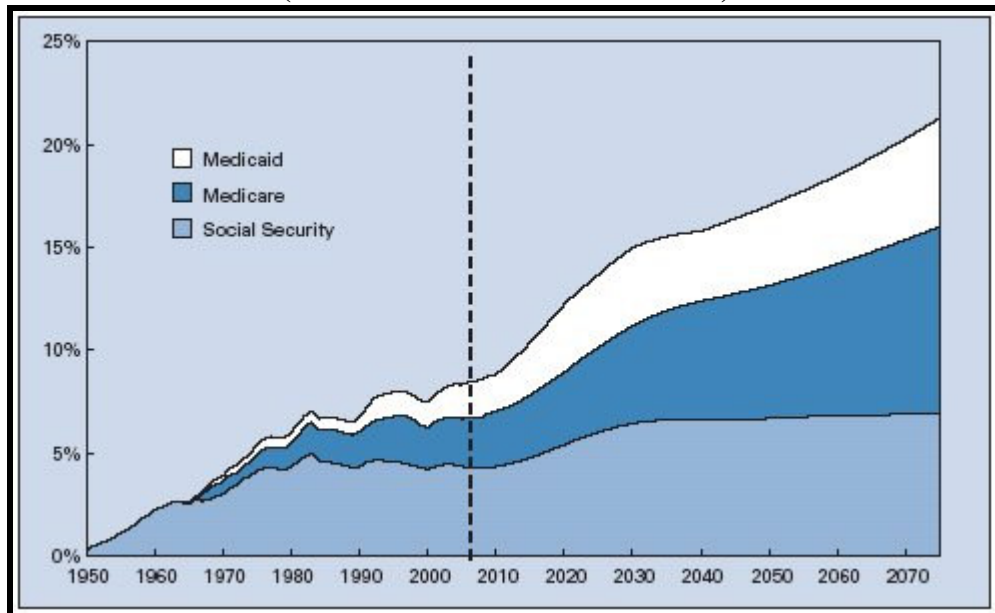
SALINE COUNTY POPULATION PROJECTIONS

	2005	2015	Increase (Decrease)	Percent Change
Total Population	54,879	54,923	44	0.1
Age 0-19	15,943	15,745	-198	-1.2
Age 20-44	18,522	17,467	-1,055	-5.7
Age 45-64	12,665	13,403	738	5.8
Age 65-84	6,638	6,839	201	3.0
Age 85+	1,111	1,469	358	32.2

Source: "The Governor's Economic and Demographic Report 2004-2005." Provided by Saline County Commission on Aging, May 2005.

- The cost of living is expected to continue to increase creating greater challenges to the 90% of those over 65 whose major source of income is Social Security. For one-third of Americans over 65, Social Security benefits constitute 90% of their income. The latest US Census poverty data (1999) reveals that one in twelve Saline County residents 65+ live at or below the poverty level and 11% of Saline County residents ages 65+ were disabled. These statistics are reflected below in the national picture.
 (Source: United Way Building Self-Reliance United Priority Independent Living Report)

**SOCIAL SECURITY, MEDICARE, AND MEDICAID OUTLAYS
(AS A PERCENTAGE OF GDP)**



Source: C. Eugene Steuerle and Adam Carasso, The Urban Institute, 2003. Based on data from the Congressional Budget Office, "A 125-Year Picture of the Federal Government's Share of the Economy, 1950 to 2075," July 3, 2002, table 2.

**PROJECTED POPULATION CHANGE, AGE 55
AND OVER, SALINA**

	2002	2010	Change	Percent Change
55 – 64	3,794	5,445	1,651	43.5
65 – 74	3,253	3,424	171	5.3
75 and Over	3,263	3,369	106	3.2
Total 55 +	10,310	12,239	1,929	18.7

Source: U.S. Bureau of the Census; RDG Planning & Design

- The elderly population of Saline County has been growing, experiencing a 1.3% growth rate between 2000 and 2003, following a 7.5% increase between 1990 and 2000.

- An increasing number of elderly are in the upper age brackets, leading to a greater need for help with daily living. Those 75 and over are currently 6.8% of the total Saline County population (2000 U.S. Bureau of the Census), which is 50% of those 65 years and older. Those 85 and over are currently 1.8% of the total population, which is 13% of those 65 years and older.
- The population 75 years and over continues to be one of the fastest growing segments of the entire Saline County population, increasing almost 17 % in the last ten years.
- The 85 and older population has increased 15% in ten years. Only the 10-19 year old population group has increased faster.
- The substantial growth rate of the 85+ age group has significant implications for the types of services needed and the manner in which they are delivered. The challenge to Saline County senior service providers will be to develop and sustain a continuum of care, which will address the various levels of client need.

POPULATION 65 YEARS AND OVER BY HOUSING TYPE

	Persons	Percent
Group Quarters	529	
Population in households	6,951	
Family (2 or more persons)	4,544	
Living alone	2,296	33.0
Male	488	20.0
Female	1,846	80.0
Other non households	111	

Source: U.S. Bureau of the Census, 2000

- In 2000, 4,854 of Saline County households contained a person 65 years or older. About 2,300 persons 65 years or older were living alone. This is substantially more than the households headed by a female with children and no husband (1,387).
- Of the 6,951 persons 65 and older who live in households (not group quarters), 33% (2,296) are living alone. Four out of five of those living alone are women.
- The growth of the older segment of the population has substantial ramifications for the housing market. There is more demand for one and two bedroom dwellings, smaller floor area and yard size for easier maintenance, ease of physical access, and proximity to community services.
- According to Census 2000 county data, 38.8% of owner occupied housing and 23.8% of renter occupied housing units are occupied by seniors ages 65 to 85+.
- The Salina Housing Authority reports greatest demand for housing is one-bedroom units. The waiting list for one-bedroom apartments is occasionally opened. This is the greatest need for elderly and disabled who do not need assisted-living.

- Over 90% of families with a 65 years or older head of household own their home while two-thirds of those living alone are homeowners. Of those living alone, women are as likely as men to reside in a dwelling they own.
- Although 4.4% of older adults have a mood disorder such as depression, up to 20% have significant symptoms of depression.
- Older adults who are caregivers to spouses or other relatives may be at an increased risk for developing heart disease, arthritis, osteoporosis and some cancers. (OSU, 2003)
- Nationally in 1999, about 11% of older Medicare enrollees received personal care from a paid or unpaid caregiver. The US Bureau of Labor Statistics predicts the demand for caregivers will grow 62% through 2010. It is realistic to expect the demand for these services to also increase in Saline County.
- The highest rate of suicide for any age group in the U.S. is among people age 85 and older (19.4 per 100,000); the second highest rate is among those between 75 and 84 (17.7 per 100,000). (AAS, 2002)
- The Saline County Commission on Aging has identified chore and maintenance assistance as a significant unmet need of the elderly.
- OCCK, Inc. owns 24 housing units for persons with disabilities. They are always fully occupied.
- OCCK, Inc. reports that the most important issue for the disabled wishing to live independently is the provision and training for specialized equipment and direct support activities to maintain the home.
- Preliminary 2006 data from the Saline County Commission on Aging's Discount Taxi Ticket Program indicators totaling 27,800.
 - Rides have increased 30% and riders under age 65 have increased 56%.
 - The trend is more frequent use per individual with 84% of the riders with incomes less than \$15,000.
- OCCK, Inc. is currently the only lift-equipped, door-to-door public transportation provider.

IV. HEALTH

Mental Health

Mental health is the successful performance of mental function, which results in a productive and fulfilling life from childhood through late life. Mental illness refers collectively to all mental disorders, which are health conditions, characterized by alterations in thinking, mood, or behavior (or some combination thereof) and which are associated with distress or impaired functioning (U.S. Department of Health and Human Services, 1999, "Mental Health: A Report of the Surgeon General-Executive Summary"). The data presented does not reflect the private mental health service sector.

CENTRAL KANSAS MENTAL HEALTH CENTER (CKMHC) MENTAL HEALTH PATIENTS

Year	New Cases	Continuing Cases	Total
2002	1,434	636	2070
2003	1,361	572	1933
2004	1,357	1,245	2602
2005	1,426	1241	2667

Source: CKMHC Annual Report, 2002 -- 2005

- CKMHC is a licensed community health center authorized by five counties. Services include outpatient individual, marital, family, and group therapy for all ages; screening and referral to inpatient treatment or other mental health services and educational programs on mental health topics.

PRIMARY PAYMENT SOURCES CLIENTS OF CENTRAL KANSAS MENTAL HEALTH CENTER

Source of Payment	2001 Percent	2002 Percent	2003 Percent	2004 Percent	2005 Percent
Insurance	40.5	40.9	37.0	29.9	32
Healthwave (children)	2.2	5.7	6.2	5.7	3
Medicaid	20.3	21.5	25.3	25.7	29
Medicare	5.4	5.5	8.7	11.9	10
Private Pay	23.5	19.6	15.8	18.5	19
Adoption, Foster Care, Family Preservation	6.7	5.2	4.8	5	4
Other	1.4	1.6	2.2	3.3	3.3

Source: CKMHC AIMS Report, 2005

- Data for 2004 (Primary Payment Sources table) shows that almost 75% of CKMHC patients' cost of service was covered by insurance or public funding; this has remained relatively consistent in the last few years. Private pay increased in 2004 after a steady decrease the previous years.

SALINE COUNTY MENTAL HEALTH PATIENTS BY AGE GROUP

Age Group	2001	2002	2003	2004	2005	Total
0-12	374	367	458	388	396	1983
13-17	439	306	468	397	419	2029
18-29	560	529	736	617	694	3136
30-49	567	583	753	638	791	3332
50-64	110	119	147	132	305	813
65+	26	29	40	33	62	190
Total	2,076	1,933	2,602	2,205	2,667	11,483

Source: Central Kansas Mental Health Center Annual Report, 2001-2005

- School aged children represent 30% of CKMHC patients.
- During 2006, 67% of clients were employment age adults.
- In spite of obvious problems associated with aging: loss of spouse, medical problems and costs, loss of mobility, and isolation, only about 2.3% of CKMHC clients, age 65+, use mental health services.

SALINE COUNTY MENTAL HEALTH REFERRALS

Referred by	Percent of Total				
	2001	2002	2003	2004	2005
Self	15	16	15	18.5	22
Family/Friends	18	18	18	19	17
Social Service Agency/SRS	16	8	8	8	6
Private Physician	13	15	14	13	17
Courts	16	13	14	14	12
Schools	5	3	4	4	4
Employee Assistance Program	11	13	13	10	8
Other	6	6	5	7	14

Source: Central Kansas Mental Health AIMS Report, 2001 – 2005

- The referral table indicates approximately 40% of people seeking assistance did so on their own with advice of family or friends. While 815 new patients are 18 years or younger (2005), only 4% of that age group was referred by schools.
- Physicians and social service agencies refer 23% of patients to CKMHC (CKMHC referrals table).

- As many as 8 million Americans who have serious mental illnesses do not receive adequate treatment each year. (HU, 2002)
- Although about 16% of American adults will develop depression at some point, only 1/5th will receive the care they need to treat the condition. (JAMA, 2003)
- The number of total inpatient psychoses cases currently represents the fifth most frequent diagnosis at Salina Regional Health Center.
- In 2003, 18 Kansas children younger than 20 committed suicide, a rate of 2.32 per 100,000 children in the population. (Kansas's Children 2007, cwla.org/advocacy/statefactsheets/2007/Kansas.htm)
- While the suicide rate for white teenage males fell somewhat between 1986 and 1997, the rate for African American male teens dramatically increased during the same period. American Indian and Alaskan natives have the highest suicide rate in the 15 to 24 age group of all American ethnic and racial groups. (Center for Disease Control, CDC, 2004)
- Nearly 15% of college students have been diagnosed with depression. (ACHA, 2004)
- About 1 student in 5 reports that they have sought personal counseling since entering college. (UCLA, 2004)
- The suicide rate among males between the ages of 15 and 24 has nearly quadrupled over the last 60 years, and the rate among families in the same age group has doubled. (CDC, 2002)

MECHANISM OF SUICIDE AMONG YOUTH, KANSAS: 1990 -- 1997

	Firearms	Suffocation	Poisoning	Other	Total
Age 10-14	13	14	1	2	30
Age 15-19	149	32	25	6	212

Source: Children's Safety Network, EDARC, 2005

(<http://www.edarc.org/pubs/statetrends2/statetrends.htm>)

**COST OF COMPLETED & MEDICALLY-TREATED YOUTH SUICIDES
AGES 0 – 20, 1996**

	Medical	Future Earnings	Quality of Life	Total
Kansas	\$13,000,000	\$38,000,000	\$159,000,000	\$210,000,000

Note: In 1998 dollars. These estimated costs have been rounded and may not exactly equal previously published cost estimates.

Source: Children's Safety Network, 2005 (<http://www.edarc.org/data.htm>)

Substance Abuse

Data search and review of literature shows substance abuse reporting poses many problems. Two sources of community wide attitudinal data came from an adult phone survey and an annual secondary school self-reporting survey. Treatment center client counts are not comprehensive and not comparable. Police and judicial data can provide a secondary measurement of alcohol and illegal drug abuse. Another recent source of community data is from the 2006 City of Salina National Citizen Survey. It reported Salina respondents' ratings of major community problems. Drugs were rated at 53%, the highest rating of all followed by taxes at 38%.

- Researchers report that substance abuse tends to be a private matter, often occurring within the home. Respondents to surveys who have substance abuse problems in their households may not be willing to share this information with survey interviewers; whether due to embarrassment, fear of legal repercussions or the belief that substance abuse is not unusual.
- In 2004, 44,300 students were surveyed nationwide. Results reported in the Salina Journal, December 20, 2004, from the State of Our Nation's Youth Survey of 44,300 students revealed:
 - Smoking is declining sharply among American teens.
 - Recent sharp increases in the use of the drug ecstasy are slowing; heroin and inhalant use is decreasing.
- In 2004, an estimated 22,000 Kansas children ages 12-17, and 108,000 adults 26 and older, were dependent on or abusing illicit drugs or alcohol. (Child Welfare League of America; www.cwla.org)
- The Adult Attitudes and Practices Survey 2001 (University of Kansas Survey Research Center) shows 19.7% of Saline County adults report that they are current smokers. Those between ages 18 and 35 had the highest smoking prevalence at 27%; ages 50-69 at 15%; and 8% over 70 smoke.
- In 1992 EPA report classified secondhand smoke a Group A carcinogen – a substance known to cause cancer in humans. There is no safe level of exposure for Group-A toxins (Respiratory Health Effects of Passive Smoking: Lung Cancer and Other Disorders, EPA, December 1992).

**SALINE COUNTY PERCENT REPORTING BINGE DRINKING
AND SMOKELESS TOBACCO**

Year	Had 5 or more alcoholic drinks in a row in past 30 days		Used smokeless tobacco at least once in the past 30 days	
	Saline County	Kansas	Saline County	Kansas
2001 Total	19.2	18.7	7.0	7.0
8th Grade	10.4	12.8	4.5	5.2
10th Grade	27.2	28.1	9.1	10.1
12th Grade	38.4	37.8	14.3	13.6
2002 Total	19.0	17.9	6.2	6.6
8th Grade	10.2	11.5	3.9	4.8
10th Grade	26.1	26.6	8.6	9.3
12th Grade	42.2	37.4	13.6	12.7
2003 Total	20.0	17.4	4.7	6.6
8th Grade	13.5	11.8	1.9	4.8
10th Grade	26.8	25.8	6.9	9.4
12th Grade	46.2	36.7	10.1	12.6
2004 Total	15.1	17.2	3.5	6.1
8th Grade	11.5	10.7	4.0	4.3
10th Grade	23.9	24.7	3.7	8.4
12th Grade	28.7	36.6	6.7	12.2
2005 Total	10.2	16.5	3.3	6.6
8th Grade	6.1	10.	2.4	4.3
10th Grade	12.6	23.7	4.4	9.8
12th Grade	25.2	35.1	5.5	12.9
2006 Total	15.7	16.7	5.4	6.4
8 th Grade	8.9	10.2	10.4	11.5
10 th Grade	29.4	23.8	19.1	20.6
12 th Grade	29.3	35.5	17.2	27.6

Source: Southeast Kansas Education Center, Kansas Communities that Care Student Survey, 2006
(<http://www.ctcdata.org/?page=County/cquesdataviewer.php&county=10085&domaintype=42&scale=34>)

- Saline County Schools and classes voluntarily and in some cases inconsistently participate in the annual student survey.
- Students from grades 8, 10, and 12 have been asked each year since 1997 if they had had at least 5 drinks in a row over the past two weeks. The percentages displayed above for years 2001 – 2006 are those who had done so at least once.
- Kansas’ statistics are fairly consistent and range from a high of 18.7% in 2001 to a low of 16.7% in 2006. No specific trend can be determined from these numbers other than that the rate is probably somewhere in the low to mid teens. Tenth graders drink significantly more than 8th graders and their annual rates are more consistent with each other. About 29.4% of tenth graders admit binge drinking. About 29.3% of seniors have done binge drinking that is consistent with state numbers.

30-DAY PREVALANCE: ALCOHOL & CIGARETTES

	Percent who smoked cigarettes at least once in 30 days		Percent who used alcohol at least once in the past 30 days	
	Saline County	Kansas	Saline County	Kansas
1998 Total	23.4	21.8	34.0	35.0
8th Grade	16.7	19.3	25.5	30.6
10th Grade	33.1	31.1	47.7	47.8
12th Grade	43.6	36.2	57.8	57.2
2000 Total	18.5	18.5	41.1	36.8
8th Grade	14.3	13.9	30.9	31.2
10th Grade	22.9	26.3	57.8	49.9
12th Grade	36.8	35.3	70.3	61.6
2002 Total	13.8	14.8	34.1	32.9
8th Grade	10.2	11.2	27.8	27.1
10th Grade	16.4	21.6	43.0	45.6
12th Grade	29.6	28.6	63.0	57.7
2004 Total	11.7	13.2	27.8	32.2
8th Grade	11.6	9.4	25.4	26.6
10th Grade	17.5	18.9	44.3	44.3
12th Grade	18.5	26.2	44.1	55.9
2005 Total	5.4	12.9	24.3	31.0
8 th Grade	5.7	9.3	17.9	24.8
10 th Grade	5.6	18.4	34.4	42.5
12 th Grade	8.9	25.1	45.7	54.7
2006 Total	10.7	12.1	30.0	31.3
8 th Grade	10.0	8.7	24.4	24.3
10 th Grade	16.8	16.6	48.7	42.6
12 th Grade	15.7	24.6	43.2	55.5

Source: Kansas Communities that Care Student Survey, 2006,
<http://www.connectks.org/portal.php?county=10085&outcome=08&quest=show>

- Alcohol remains the most popular drug with teens.
- Historically local data for alcohol use totals among all grades has fluctuated with a slow and steady downward trend over all, with 30% in 2006.
- There has been a steady and consistent decrease of alcohol use in all three grades through the years 1998 to 2005. 2006 data indicates an increase while still staying below state average.
- The largest increase in smokers is between 8th and 10th grade.

30-DAY PREVALANCE: MARIJUANA

	Percent who used marijuana at least once in the past 30 days	
	Saline County	Kansas
1998 Total	15.3	10.8
8th Grade	9.2	8.8
10th Grade	26.2	17.
12th Grade	26.9	18.1
2000 Total	12.9	10.
8th Grade	6.1	7.1
10th Grade	21.8	15.9
12th Grade	25.5	18.5
2002 Total	11.4	10.1
8th Grade	6.3	6.9
10th Grade	17.9	17.2
12th Grade	24.1	18.6
2004 Total	11.	9.5
8th Grade	9.	6.8
10th Grade	19.	14.6
12th Grade	18.5	18.4
2005 Total	3.9	8.6
8 th Grade	2.2	5.6
10 th Grade	7.	13.6
12 th Grade	7.9	16.8
2006 Total	10.4	8.6
8 th Grade	7.3	5.7
10 th Grade	20.2	13.2
12 th Grade	11.1	16.2

Source: Kansas Communities that Care Student Survey, 2006,
<http://www.connectks.org/portal.php?county=10085&outcome=08&quest=show>)

- Marijuana use has significantly decreased since 1998 among 8th graders and more gradually with more fluctuation in 10th graders.
- 2006 shows a greater reduction to 11.10% for 12th graders.
- Usage has remained fairly consistent among 12th graders at about 25% until 2004 when there was a dramatic reduction in use (18.5%).
- Saline County totals have ran higher the state averages over all from 1998 through 2005 when we see a significant reduction in both Saline County totals and state totals.
- Data indicates a significant increase in usage from 8th to 10th graders while somewhat leveling off from 10th to 12th graders.

PERCENT OF STUDENTS ATTENDING SCHOOL WHILE DRUNK OR HIGH

	Percent of students who reported attending school while drunk or high at least once in the past 12 months	
	Saline County	Kansas
2000 Total	12.32	11.23
2001 Total	9.71	10.90
2002 Total	10.20	10.80
2003 Total	13.60	11.50
2004 Total	9.60	10.90
2005 Total	6.10	10.50
2006 Total	10.30	10.50

Source: Kansas Communities that Care Student Survey, 2006,
<http://www.connectks.org/portal.php?county=10085&outcome=08&quest=show>

PERCENT OF STUDENTS WHO SAID IT IS “VERY EASY TO OBTAIN”

	Alcohol		Cigarettes	
	Saline Co.	Kansas	Saline Co.	Kansas
2001 Total	28.9	29.0	38.8	39.3
2002 Total	29.6	28.3	36.8	38.0
2003 Total	27.4	27.5	33.8	36.1
2004 Total	27.9	27.2	32.1	35.1
2005 Total	20.7	26.5	25.7	34.0
2006 Total	24.2	26.3	28.4	33.3

Source: Kansas Communities that Care Student Survey, 2006,
<http://www.connectks.org/portal.php?county=10085&outcome=08&quest=show>

AVERAGE AGE OF FIRST USE

Average Age of First Use of Drugs & Alcohol: Grades 8th, 10th, and 12th						
Year	Alcohol		Cigarettes		Marijuana	
	Saline County	Kansas	Saline County	Kansas	Saline County	Kansas
2000	12.75	12.68	12.03	12.33	13.88	13.79
2001	12.80	12.59	12.15	12.18	13.87	13.59
2002	12.81	12.71	12.07	12.26	13.93	13.75
2003	12.83	12.72	12.14	12.21	13.82	13.61
2004	12.82	12.80	12.07	12.32	13.77	13.67
2005	14.40	14.47	12.23	12.38	13.97	13.70
2006	14.21	14.49	12.12	12.46	13.57	13.70

Source: Kansas Communities that Care Student Survey, 2006,
<http://www.connectks.org/portal.php?county=10085&outcome=08&quest=show>

- The Health Risk Behaviors of Saline County, 2005-2006 update revealed the following self-reported adult information:
 - 77% reported never smoking cigarettes
 - 36% reported smoking at least once
 - 6.2% reported once in a while
 - 4.7% reported that they regularly smoke
 - 2.8% reported smoking regularly in the past

**DRIVING UNDER THE INFLUENCE (D.U.I.)
NON-FELONY ADJUDICATIONS:
CITY OF SALINA MUNICIPAL COURTS**

Year	Adults	Juveniles
2000	264	10
2001	374	7
2002	236	0
2003	201	6
2004	180	6

Source: City of Salina Municipal Court, 2004

*Includes only individuals with 1st or 2nd D.U.I. offense within city limits.

JUVENILE COURT FILINGS RATE: PER 1,000 CHILDREN

	1999	2000	2001	2002	2003	2006
Saline County	31.0	29.3	62.5	62.2	74.8	60.4
Kansas	23.9	23.9	23.9	22.0	21.0	20.6

Source: Kansas Kids Count Data, 2006

- The Salina Municipal Court handles first and second offense DUI cases (see table on DUI adjudications). These are not rated as felonies. While the number of cases fluctuates substantially, the trend is lower. The number of cases also depends on the level of law enforcement activity. The number of juvenile cases is a very small portion of the total.
- A 2003 census of juvenile offenders showed 1,071 children in juvenile correction facilities in Kansas. (Kansas' Children 2007, cwla.org/advocacy/statefactsheets/2007/Kansas.htm)
- In 2003, three children younger than 18 were killed in firearm homicides in Kansas compared with two in 2002 as well. (Ibid)
- In 2005, 6,555 children younger than 18 were arrested in Kansas. Of these arrests, 2,177 were for violent crimes and 55 were for possession of a weapon. (Ibid)

ACCESS TO HEALTH CARE

Approximately 13% of Kansans (more than 1 out of 10) do not have health insurance, and most of the uninsured (84%) are working families. People working at small companies with less than 20 employees have a 1 in 3 chance of not being insured. Nationally 85 out of every 100 people who become unemployed lose their health insurance. (Source: "Living on the Edge." A Report on the State of Low-Income Working Kansas Families, Kansas Association of Community Action Programs, 2005)

SALINE COUNTY HEALTH CARE COMPARISONS

Percent	Saline County	Kansas	U.S.
Reporting health was fair to poor	12	12	14
No health insurance or other coverage (2005)	14.97	11	12
Unable to see doctor due to cost in last 12 months	7	8	10
Lacking a regular health professional	12	14	n/a
Who had their cholesterol checked in last 5 years	68	69	n/a

Source: Health Risk Behaviors of Saline County, 2000-2001, 2005 Updates (BRFSS)
Health Care "Insurance" Coverage

SALINE COUNTY HEALTH RISK BEHAVIORS PERCENT COMPARISONS

	2001	2004
Current Smokers	22	25.22
Hypertension	24	16.74
High Cholesterol	29	29.91
Diabetes	5	5.67
Asthma	7	7.67
Lacked Immunizations:		
Pneumococcal	80	78.87
Influenza (Flu)	70	73.23
Participates in Some Leisure-Time Physical Activity	68	76.63
Has Physical Activity Limitations	13	14.48
No Personal Health Care Provider	12	14.49

Source: Saline County Health Risk Behaviors, BRFSS, 2005 Updates

KANSAS HEALTH CARE COVERAGE RATES

Question	2001		2003	
	Yes %	No %	Yes %	No %
Have health care “insurance” coverage	92.2	7.8	89.9	10.1
Have Medicare	19.8	80.2	18.2	81.8
Type of coverage				
Your employer	67.3	32.7	42.6	57.4
Someone else’s employer	22.4	77.6	22.3	77.7
Plan bought on own	6.6	93.4	10.2	89.8
Medicaid or Medical Assistance	0.8	99.2	2.9	97.1
Military, CHAMPUS, VA	0.8	99.2	2.9	97.1
Other	2	98	0.9	99.1
None	0.2	99.8		

Source: BRFSS, 2003

(<http://www.kdhe.state.ks.us/brfss/Questionnaires/quest2003.html#HealthCareAccess03>)

- Salina Family Health Care Center and Dental Clinic is underserved or at risk. 42% of the patients are Medicare or Medicaid.
- 13.1% of Saline County residents are uninsured.
- Those who receive health insurance from their employer and those eligible for Medicaid or Medicare have more to spend on other needs than do those who have to buy medical care. The same can be said for the costs of transportation to work, for clothing to attend work, or for childcare to be able to work. (Mangum, Garth. “Poverty Ain’t What it Used to Be”)
- 65% are insured through their own or someone else’s employer. Roughly 20% of respondents have Medicare coverage.

SALINE COUNTY HEALTH CARE INSURANCE COVERAGE

Question	Yes %	No %
How long since had coverage		
With past 6 months	24.9	75.1
Within past year	25.7	74.3
Within past 2 years	19.4	80.6
Within past 5 years	12.2	87.8
5 or more years ago	17.7	82.3
During past 12 months, any time no coverage for respondents currently covered	4.1	95.9

Source: BRFSS, 2003

(<http://www.kdhe.state.ks.us/brfss/Questionnaires/quest2003.html#HealthCareAccess03>)

- In 2003, 13.1% of Saline County residents did not have health care coverage, this represents an increase of roughly 6% from previous years.
- Of those reporting no current coverage (next table), 51% had lost that coverage in the past year; 49% of persons have been without it more than one year, showing in many cases lack of coverage is not transitory.

SALINE COUNTY STATE INSURED BENEFICIARIES

Benefit Plan	Number by Age					Total by Program
	5 – 12	13 – 15	16	17	18	
Medically Needy	0	0	0	0	1	1
Medicaid	1,130	322	88	77	106	1,723
CHIP (Title 21)	383	145	38	27	17	610
Total	1,513	467	126	104	124	2,334

Source: SRS, 2005

- Salina Family HealthCare Center reports an annual 52% average increase in unduplicated patients between 2001 and 2005.

SALINA REGIONAL HEALTH CENTER UNINSURED PATIENTS

	2001	Percent of Total Patients	2002	Percent of Total Patients	2003	Percent of Total Patients	2004	Percent of Total Patients	2005	Percent of Total Patients
Number of Inpatients	492	4.5	520	4.7	576	5.3	574	5.6	357	.51
Number of Outpatients	6,409	9.7	6378	11.9	6737	12.8	6902	12.9	7,529	10.80

Source: Salina Regional Health Center and Welfare Reform Study, 2005

- Data supplied by Salina Regional Health Center indicates a consistent increase in service to uninsured residents.

Access to Dental Care

The importance of regular dental care for all ages is misunderstood and complicated by limited access to dental care for growing segments of the populations.

In December 2005, access improved when the Salina Health Education Foundation launched the Dental Clinic in conjunction with its Salina Family Healthcare Center. The clinic serves uninsured, Medicaid, and Healthwave patients onsite and does outreach work with USD 305, Heartland Healthy Start and the Saline County Health Department.

Responses to the Behavioral Risk Factor Surveillance Survey of Saline County (BRFSS) show that access to dental care is a significant problem for segments of the population and insurance coverage is not as prevalent as for medical services. See full report, Health Risk Behaviors of Saline County, 2000-2001, for more detail.

- “Many people do not see regular dental care as an important part of overall health until they run into problems.” (January 28, 2002 quotes Surgeon General David Satcher) Cavities cause an estimated 60 million hours of missed school each year nationwide. (Ibid)
- Nationally, 24% of the elderly have lost all their teeth according to the Associated Press article. (Ibid)

SALINE COUNTY DENTAL HEALTH INDICATORS

Question	Response Percent
Last visited dentist	
1 to 12 months	70.5
1 to 2 years	9.3
2 to 5 years	7.4
5 or more years	11.4
Never	1.5
Main reason not visited dentist in last year	
No reason to go (no problems or no teeth)	44.8
Cost	17.2
Other	14.0
Dislike going	11.5
Not priority	10.9
No dentist or no access	1.5
Insurance coverage for routine dental care	
Yes	65.7
No	34.3
Currently in need of any dental services (all respondents)	
Yes	18.8
No	81.2

Source: Health Risk Behaviors of Saline County, 2000-2001 (BRFSS)

- The above table shows that 20% of the 2000-01 Behavioral Risk Factors Surveillance Survey respondents have not seen a dentist for more than two years; 13% for more than five years or never.
- Of respondents not seeing a dentist in the past year, 17% cited cost, 11% stated it was not a priority and only 1.5% said they had no access.
- Two-thirds of BRFSS respondents have dental insurance, compared to 92% who have health insurance. Almost 20% of all respondents report that they currently need dental services.
- In February 2001, the U.S. Department of Health and Human Services designated Saline County as a dental health professional shortage area, mainly because dental care is not available to most low-income families.

Childhood Obesity

“One of the most significant concerns from a public health perspective is that we know a lot of children who are overweight grow up to be over weight or obese adults, and thus at a greater risk for some major health problems such as heart disease and diabetes. One critical answer to this problem is that we all must work together to help our children make physical activity a life-long habit.” -- CDC Director Dr. Julie Gerberding (National Center for Health Statistics, 2000)

Sunflower Foundation, focusing on Health Care for Kansas, awarded Saline County Alliance for Healthy Community a grant (RFP – 02 – 103) submitted by the Saline County Fit for Life Coalition to collect student BMI/nutrition and activity survey data and develop a comprehensive action plan to promote increased physical activity and improve healthy eating habits to reduce the prevalence of childhood obesity.

The full report, entitled “Saline County Children’s Health Survey: June 2004,” is available www.salhelp.org/communityreports or the Salina Area United Way. The following presents data and survey findings from the report.

BODY MASS INDEX (BMI) FOR AGE: SALINE COUNTY

			No Reply	Total Scores for BMI, All Grades & Genders			
				Overweight BMI 95% +	At Risk of Overweight BMI 85% to 95%	Acceptable BMI 5% to 85%	Underweight BMI Under 5%
	Total Survey	1600	14	328	263	973	22
		100%	.90%	20.5%	16.4%	60.8%	1.4%
Grade	1st Grade	613	3	111	100	388	11
			.5%	18.1%	16.3%	63.3%	1.8%
	3rd Grade	625	2	141	106	371	5
			.3%	22.6%	17%	59.4%	.8%
	7th Grade	382	9	76	57	214	6
			.3%	22.6%	17%	59.4%	.8%
Sex	Male	804	1	170	120	503	10
			.1%	21.1%	14.9%	62.6%	1.2%
	Female	784	1	158	143	470	12
			.1%	20.2%	18.2%	59.9%	1.5%

Source: Saline County Children’s Health Survey, June 2004, salhelp.org/communityreports

“EAT ONE MEAL PER DAY WITH FAMILY”

		Eat One Meal/Day With Family?	
		YES	NO
Grade Level	First Grade	507	99
	Third Grade	546	78
	Seventh Grade	322	38
Sex	Male	679	122
	Female	686	91

Source: Saline County Children’s Health Survey, salhelp.org/communityreports

“FREQUENCY OF EATING FAST FOODS”

		Frequency of Eating Fast Foods			
		7 times/week	1 time/week	2 + times/week	Seldom/Never
Grade	First Grade	--	--	--	--
	Third Grade	78	202	175	171
	Seventh Grade	20	131	82	128
Sex	Male	54	155	134	149
	Female	44	176	122	144

-- = No Data

Source: Saline County Children’s Health Survey, salhelp.org/communityreports

- Almost three out of every four families report eating out at least once a week in a fast food establishment. Students reported hamburgers, fries, and soft drinks as their favorite meal.
- In 2004, Saline County Youth were 20.5% overweight compared with national statistics of 13.5% of youth overweight (1999) and 4.5% of youth overweight (1970).
- Saline County Students in grades 1, 3, and 7 reported an overweight level of 20.5%.
- Almost four in ten students (37.1%) in grades 1, 3, and 7 are overweight or at risk for becoming overweight.
- Childhood obesity is related to serious health problems such as hypertension, asthma, sleep apnea, and type 2 diabetes, as well as poor psychological functioning and decreased well being (low self esteem)
- Four in every ten students reported doing physical activities with their families. Saline County families need to be conscious of the amount of time devoted to sedentary pursuits and encourage children to increase the time doing physical activities (41% reported involvement in physical activities)
- About eight in ten students routinely eat breakfast, and eat one meal a day at home.
- About eight in ten students eat most of their school meal, and drink their milk.

- About six in ten do not finish their meal by the end of the lunch period. The primary reason for not finishing their meal is that there is not enough time to complete the task.

APPENDIX

I. COMMUNITY CONDITIONS

www.census.gov/popest/cities/tables

www.kdhe.state.ks.us/hci/annsumm.html

www.population.gov

www.ku.edu/pri/ksdata/esum/report/20169.htm#clf

www.censusscope.org

www.cwla.org

www.ksde.org/leaf/reports_and_publications/free_redc_percent/free_red.htm

www.nationalservice.gov

www.salhelp.org

II. COMMUNITY SERVICES

www.ksbe.stats.ks.us

www.ksrevenue.org/pdf/EstEffect.pdf

www.ksde.org

www.seta.iastate.edu

III. POPULATION SEGMENTS

www.kaccrra.org

www.kac.org

IV. HEALTH

www.connectks.org/portal.php?county=10085&outcome=05&quest=show

www.kaccrra.org

www.cwla.org

www.edarc.org/pubs/statetrends2/statetrends.htm

www.edarc.org/data.htm

www.ctcdata.org/?page=County/cquesdataviewer.php&county=10085&domaintype=42&scale=34

www.connectks.org/portal.php?county=10085&outcome=08&quest=show

www.kdhe.state.ks.us/brfss/Questionnaires/quest2003.html#HealthCareAccess03

salhelp.org/communityreports